



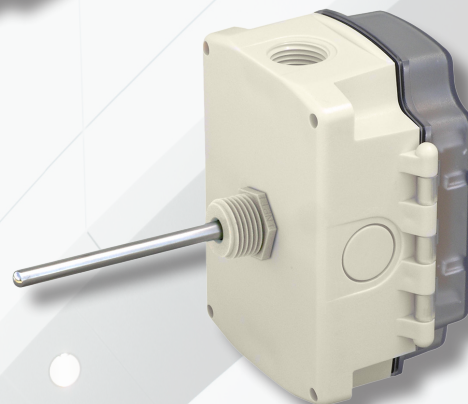
i-Vu® Building Automation System ZS Immersion Sensors



The i-Vu® Building Automation System provides everything you need to access, manage, and control your building, including the powerful i-Vu user interface, plug-and-play BACnet controllers, and state-of-the-art Carrier equipment.

The Carrier line of communicating ZS immersion sensors are designed to monitor water temperature in pipe applications. The sensor is potted inside a 1/4" stainless steel probe with a thermally conductive compound. All immersion units are mounted in a thermowell and have etched Teflon® lead-wires and double encapsulated sensors to create a watertight package that can withstand a wide range of humidity and condensation.

The ZS immersion sensors connect directly to the dedicated sensor network (Rnet) of a Carrier i-Vu controller. This communicating sensor network supports up to 15 ZS sensors through a single port, eliminating the need to consume multiple inputs on the controller.



Immersion unit probes are required to be inserted into a thermowell.

Sensor Part # (Back Probe)	Sensor Part # (Bottom Probe)	Description
ZSI-B-2-6-B	ZSI-S-2-6-B	ZS Immersion Sensor 2" in IP65 enclosure
ZSI-B-4-6-B	ZSI-S-4-6-B	ZS Immersion Sensor 4" in IP65 enclosure

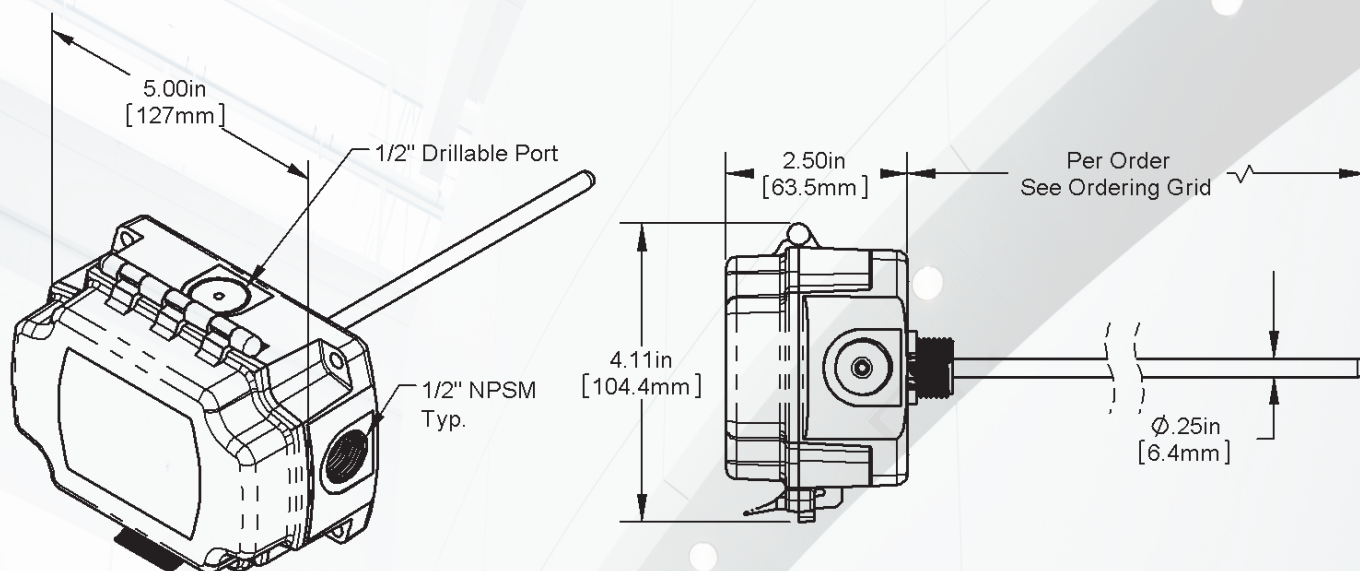
2" Thermowell Part #	4" Thermowell Part #	Description
ZSI-T-2-WSS-B	ZSI-T-4-WSS-B	Insertion thermowell - Two-piece welded 304 stainless
ZSI-T-2-MSS-B	ZSI-T-4-MSS-B	Insertion thermowell - One-piece machined 304 stainless
ZSI-T-2-MB-B	ZSI-T-4-MB-B	Insertion thermowell - One-piece machined brass



i-Vu® Building Automation System ZS Immersion Sensors

Specifications

Sensor	Range:	-40° to 212°F (-40° to 100°C)
	Accuracy:	±1.3°F (0.72°C)
Enclosure material	Polycarbonate, UL94V-0	
Enclosure rating	NEMA 4, IP66, UV rated	
Enclosure dimensions	Width:	5 in. (12.7 cm)
	Height:	4.15 in. (10.54 cm)
	Depth:	2.5 in. (6.35 cm)
Probe	304 SS 0.25" (0.64 cm) diameter 2 or 4 in. (5.08 or 10.16 cm) length specified at time of order	
Power requirements	12 Vdc @ 6 mA	
Power supply	The 4-conductor Rnet cable from a controller supplies +12 Vdc @ 210 mA. For additional power, use an external power supply. Use the above power requirements to calculate the size of the external power supply. The controller and the external power supply must share a common ground.	
Communication	115 kbps	
Mounting	Sensor's 1/2 in. NPSM plastic threads are screwed into a thermowell	
Listed by	FCC Part 15-Subpart B-Class B, CE	



Enclosure Dimensions

Width: 5.0" (12.7 cm)

Height: 4-3/32" (10.4 cm)

Depth: 2-1/2" (6.35 cm)



CONTROLS EXPERT

Tested. Certified. Factory Authorized.

**For more information, contact
your local Carrier Controls Expert.**

Controls Expert Locator:
www.carrier.com/controls-experts

© Carrier Corporation 2017 Cat. No. 11-808-606-01 06/17
Manufacturer reserves the right to discontinue, or change at any time, specifications or designs, without notice and without incurring obligations. Trademarks are properties of their respective companies and are hereby acknowledged.