



INSTALLATION DATA

1830-620

PILOT BURNER WITH SAFETY SWITCH

The 1830-620 Pilot Burner with Safety Switch is designed for use with natural gas. The recommended input rating in BTU/hr is:

- Gas: Natural
- Orifice Size: 0.018
- Inlet Pressure: 7.0 in W.C.
- Input Rating: 950 BTU/hr

The electrical rating for the 1830-620 is 30V AC, 60 Hz, and 1.0 Amp. To ensure proper installation, the appliance transformer must be rated 24 Volts/20VA minimum.

When replacing the pilot burner, you must remove the old fitting from the pilot tube to the gas line and replace with the new fitting and orifice included in this kit.

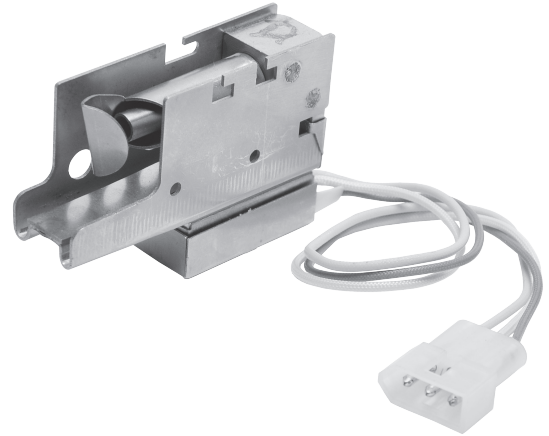
Follow these steps to install this pilot.

1. Turn off all electric power and gas to the appliance before attempting to disconnect the wiring and gas valve.
2. Remove the pilot assembly and disconnect the wiring from the existing gas valve. Inspect the inside of the pilot tubing. It should be free from any foreign matter. Clean or replace if necessary.
3. Reinstall new pilot assembly back into the original position and wire the pilot lead wires to gas valve terminals. **NOTE:** The pilot is not to be relocated or altered.
4. Check for gas leaks on the appliance piping, pilot tubing and control system downstream of the shutoff valve in the supply line to the appliance.
5. Determine if the pilot is burning properly and main burner ignition satisfactory.

Compliance with American National Standards ANSI Z21.20 – Latest Revision: Automatic Gas Ignition Systems and Components.

For a 2-wire application:

1. Cut and remove the 3-wire plug.
2. Cap the green wire.
3. Strip the yellow and white wires back ½ inch.
4. Make connection as required.



CAUTION

The 1830-620 pilot burner should be installed by a qualified service technician with regard for safety, as improper installation could result in a hazardous condition.

Installation must comply with all local codes or, in the absence of local codes, with the latest edition of the National Fuel Gas Code, ANSI X233, and the National Electric Code ANSI/NFPA No. 70.

The pilot burner must be used only on appliances equipped with an atmospheric gas burner. Use on direct vent type appliances and power burners is prohibited.

