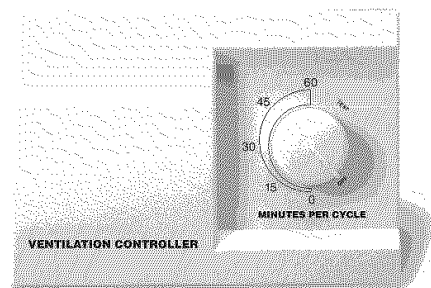
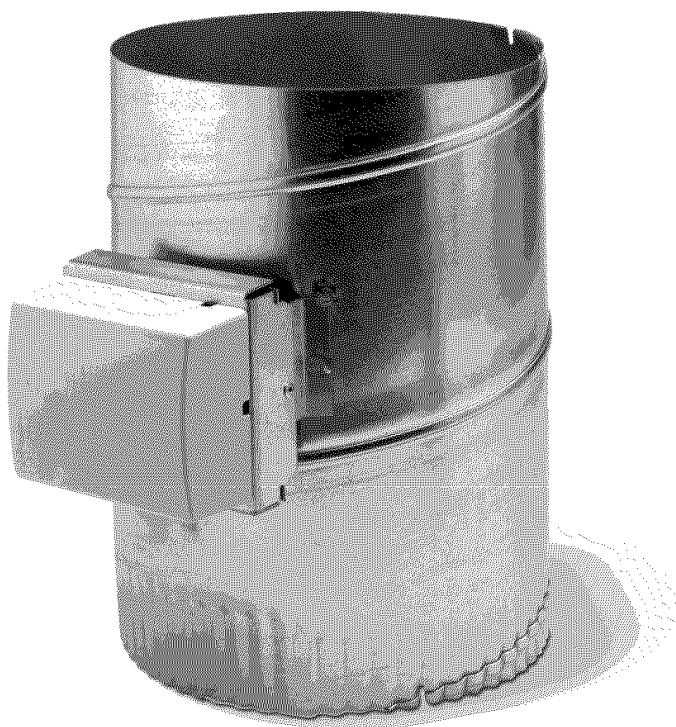


FAVXR6C2100-A01

**Fresh Air Vent Damper
and Control**

Owner's Manual



READ AND SAVE THESE INSTRUCTIONS

**Includes Safety & Operating Instructions
and Warranty Information**

WARNING

ELECTRICAL SHOCK HAZARD

**Failure to follow this warning could result in personal injury or death.
Disconnect electrical power to the HVAC system before servicing.**

I. PRINCIPLE OF OPERATION

The Fresh Air Vent and Controller are installed as part of the home's heating and cooling system to manage the quantity of fresh air introduced into the structure.

With today's homes being built "tighter" for improved energy efficiency, many states and provinces now require mechanical ventilation as part of the building code. In these tight homes, contaminants including radon, formaldehyde, household chemicals, smoke and other odors can build up to levels that exceed safe thresholds.

The Fresh Air Vent system controller provides the user with adjustable flexibility to precisely set up and manage fresh air to reduce or dilute the volume of "stale" air in the home – at an affordable price point.

The system allows fresh air to be introduced throughout the year, except in extreme temperature and humidity conditions. The controller does not allow the damper to open when outdoor temperatures are above 100°F (38°C), below 0°F (-17°C), or if indoor humidity levels are above 55%, in order to prevent conditions that would have a negative impact on comfort.

Working with your Fresh Air Vent Damper system the Ventilation Controller tells when, and how long, it should operate. It does this through continuous monitoring of your indoor humidity, along with the outdoor temperature. It then operates according to the timer settings as adjusted to your preference, or local codes or the HVAC industry recognized ASHRAE 62.2-2007 guidelines.

Please Note: The Ventilation Controller will not work if the outdoor fresh air intake vent is clogged with debris. Clean this regularly. Also please make sure to not obstruct or close off the return air grilles of your heating system in order to protect your furnace.

II. SET-UP INSTRUCTIONS

Your Ventilation Controller is installed in the return duct of your furnace or heat pump. There are two adjustable settings, the **cycle time** and the actual **ventilation time** within each cycle. Here's how this works. If the **cycle time** is set to 2 hours and the controller knob is set to 40 minutes, you will get 40 minutes of ventilation every two hours.

Your ventilation setting, which is 40 minutes every 2 hours in this example, can be met by the operation of your heating or cooling system. Or if weather conditions are comfortable or the thermostat is on setback, the Controller itself will turn on the furnace blower to provide the 40 minutes.

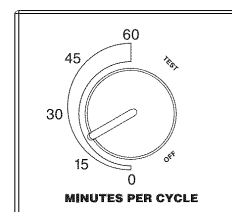
A. SETTING THE CYCLE TIME INTERVAL

- Your Installer should have already set this for you. This will likely be at the recommended factory setting of two hours.
- If there is a need to change this, consult your dealer.

B. SETTING THE VENTILATION TIME

- The knob on the front of the Controller is used to set the **ventilation time** within the cycle interval set in Step A.
- The **TEST** setting is used to check the device for proper installation. It is not for normal operation, it will only activate the Controller for 1 minute. Do not leave the knob at TEST, it does not allow actual operating time.
- The **OFF** setting cuts off all circuit activation, while **0** leaves the circuit electrically active but it will not operate.
- The dial is labeled in 15 minute increments, but can be set to any estimated value within 5 minute accuracy. The Installer will have already set this for you according to the size and number of occupants for your home. If you feel like you need more or less time, turn the knob to a maximum of 5 minutes either way. See how this works before adjusting again.

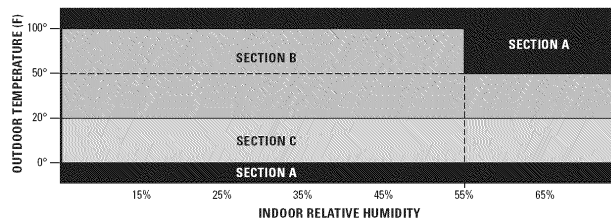
FIGURE 2 – Ventilation Time



III. OUTDOOR TEMPERATURE AND INDOOR HUMIDITY CONTROLLER LIMITS

As installed your Ventilation Controller will use input measurements of Outdoor Temperature and Indoor Humidity, plus the adjusted time settings, to compute activation. The temperature outdoors is measured with a sensor at the fresh air duct inlet. Indoor Humidity is measured in the return duct with a sensor built into the Controller. In coordination with the timer settings, the Controller then operates according to the temperature and humidity limits shown in **Diagram 1** below.

DIAGRAM 1 – Operating Limits



Section A: Ventilation prevented due to temperature extremes and/or high indoor humidity.
Section B: Ventilation per the timer settings.
Section C: Ventilation optional if required. Consult your dealer for recommendations.

If the "TIME ONLY" resistor is used instead of the Outdoor Temperature Sensor, the Controller's operation is determined by the timer settings as adjusted only. The Controller will not limit operation based on the temperature and humidity limits as shown in **Diagram 1**. This feature is important for areas with moderate climates.

If a jumper wire is used in place of the Outdoor Temperature Sensor, the Controller will disregard the temperature setting and base ventilation operation on the indoor relative humidity and the timer settings only. In this mode the Controller won't allow ventilation if the indoor RH rises above 55%.

IV. LIMITED WARRANTY

FOR WARRANTY SERVICE OR REPAIR, FOLLOW THESE STEPS IN ORDER:

FIRST: Contact the installer. You may find the installer's name on the equipment or in your Owner's Packet.

SECOND: For help finding a servicing dealer contact: CAC / BDP, Consumer Relations, P.O. Box 4808, Syracuse, New York 13221
Phone: 1-800-227-7437

PRODUCT REGISTRATION: You can register your product online at www.cac-bdp.com or call 1-800-227-7437.

Model No. _____ Unit Serial No. _____

Date of Installation _____ Installed by _____

Name of Owner _____ Address of Installation _____

CAC / BDP (hereinafter "Company") warrants this product against failure due to defect in materials or workmanship under normal use and maintenance as follows. All warranty periods begin on the date of original installation. If a part fails due to defect during the applicable warranty period Company will provide a new or remanufactured part, at Company's option, to replace the failed defective part at no charge for the part. Alternatively, and at its option, the Company will allow a credit in the amount of the then factory selling price for a new equivalent part toward the retail purchase price of a new Company product. Except as otherwise stated herein, those are Company's exclusive obligations under this warranty for a product failure. This limited warranty is subject to all provisions, conditions, limitations and exclusions listed below and on the reverse (if any) of this document.

OWNER-OCCUPIED, SINGLE FAMILY RESIDENTIAL APPLICATIONS: This warranty is to the original purchasing owner and is transferable only to the extent and as stated in the Warranty Conditions and below. The warranty period in years, depending on the part and the claimant, is as shown in the chart below.

		Limited Warranty (Years)	
Series	Product	Original Owner	Subsequent Owner
N/A	Fresh Air Vent	5	5

OTHER APPLICATIONS: This warranty is freely transferable without registration. The warranty period is one (1) year on all such applications.

LEGAL REMEDIES – The owner must notify the Company in writing, by certified or registered letter to CAC / BDP, Warranty Claims, P.O. Box 4808, Syracuse, New York 13221, of any defect or complaint with the product, stating the defect or complaint and a specific request for repair, replacement, or other correction of the product under warranty, mailed at least thirty (30) days before pursuing any legal rights or remedies.

WARRANTY CONDITIONS:

- Where a product is installed in a newly constructed home, the date of installation is the date the homeowner purchased the home from the builder.
- If the date of original installation cannot be verified, then the warranty period begins ninety (90) days from the date of product manufacture (as indicated by the model and serial number). Proof of purchase may be required at time of service.
- Product must be installed properly and by a licensed HVAC technician.
- The warranty applies only to products remaining in their original installation location.
- Installation, use, care, and maintenance must be normal and in accordance with instructions contained in the Installation Instructions, Owner's Manual and Company's service information.
- Defective parts must be returned to the distributor through a registered servicing dealer for credit.

LIMITATIONS OF WARRANTIES: ALL IMPLIED WARRANTIES AND/OR CONDITIONS (INCLUDING IMPLIED WARRANTIES OR CONDITIONS OF MERCHANTABILITY AND FITNESS FOR A PARTICULAR USE OR PURPOSE) ARE LIMITED TO THE DURATION OF THIS LIMITED WARRANTY. SOME STATES OR PROVINCES DO NOT ALLOW LIMITATIONS ON HOW LONG AN IMPLIED WARRANTY OR CONDITION LASTS, SO THE ABOVE MAY NOT APPLY TO YOU. THE EXPRESS WARRANTIES MADE IN THIS WARRANTY ARE EXCLUSIVE AND MAY NOT BE ALTERED, ENLARGED, OR CHANGED BY ANY DISTRIBUTOR, DEALER, OR OTHER PERSON, WHATSOEVER.

THIS WARRANTY DOES NOT COVER:

- Labor or other costs incurred for diagnosing, repairing, removing, installing, shipping, servicing or handling of either defective parts, or replacement parts, or new units.
- Any product purchased over the Internet.
- Normal maintenance as outlined in the installation and servicing instructions or Owner's Manual, including filter cleaning and/or replacement and lubrication.
- Failure, damage or repairs due to faulty installation, misapplication, abuse, improper servicing, unauthorized alteration or improper operation.
- Failure to start due to voltage conditions, blown fuses, open circuit breakers, or damages due to the inadequacy or interruption of electrical service.
- Failure or damage due to floods, winds, fires, lightning, accidents, corrosive environments (rust, etc) or other conditions beyond the control of Company.
- Parts not supplied or designated by Company, or damages resulting from their use.
- Products installed outside the U.S.A. or its territories and Canada.
- Electricity or fuel costs, or increases in electricity or fuel costs from any reason whatsoever, including additional or unusual use of supplemental electric heat.
- Any cost to replace, refill or dispose of refrigerant, including the cost of refrigerant.
- ANY SPECIAL, INDIRECT OR CONSEQUENTIAL PROPERTY OR COMMERCIAL DAMAGE OF ANY NATURE WHATSOEVER.** Some states or provinces do not allow the exclusion of incidental or consequential damages, so the above limitation may not apply to you.

This Warranty gives you specific legal rights, and you may also have other rights which vary from state to state or province to province.

10006396 1.09
B2204747A

Copyright 2009 CAC / BDP • 7310 W. Morris St. • Indianapolis, IN 46231
Printed in U.S.A. Edition Date: 01/09

Catalog No: OM-FAV-01

Manufacturer reserves the right to change, at any time,
specifications and designs without notice and without obligations.

Replaces: NEW