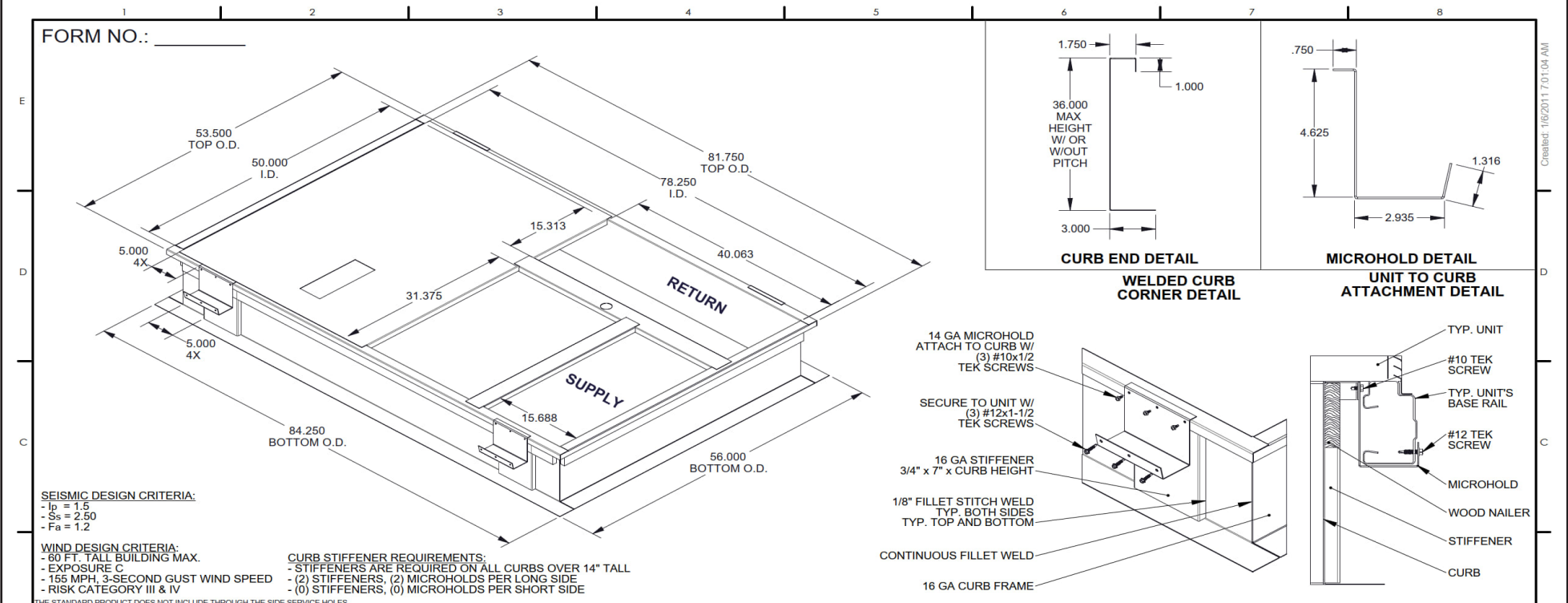




Date:	Weight: 138lbs (US) 62.6kg (Metric)	Part Number: CRBW-SRT34HA-1411
RTU:		

Submitted to:	Approved by:	Notes:
---------------	--------------	--------

Welded Structurally Calculated Curb - 14 Inches Tall Non Insulated Full Perimeter Welded Structurally Calculated Curb Curb, California State Standard, Standard Seismic Criteria, "Structurally" Stamped By A Professional Engineer, Without Pitch, Insulated Deck Pan If Applicable, Includes Wood Nailer & Hold Down Brackets. Meets Seismic Requirements for 2022 CBC & 2021 IBC. Wind Design Criteria: 60 Foot Tall Building Maimum, Exposure C, 155 MPH - 3 Second Gust Speed, Risk Category III & IV.



		CRBW-SRT34HA-08 Series 08" TALL 113 LBS. CRBW-SRT34HA-11 Series 11" TALL 125 LBS. CRBW-SRT34HA-14 Series 14" TALL 138 LBS. CRBW-SRT34HA-24 Series 24" TALL 195 LBS. CRBW-SRT34HA-36 Series 36" TALL 253 LBS.		STRUCTURALLY CALCULATED WELDED CURB MAX UNIT WEIGHT 1786 lbs.																																																																						
ANCHORAGE DETAILS TO ROOF: ALL DETAILS ARE CALCULATED USING THE SEISMIC DESIGN CRITERIA INDICATED ABOVE. FOR ANY OTHER TYPE OF ANCHORAGE THE EOR HAS THE OPTION TO CALCULATE THE ANCHORAGE USING SITE SPECIFIC PARAMETERS AND LOADS.																																																																										
STEEL ATTACHMENT (BEAM BY OTHERS) USE A307 1/2" DIA. BOLTS, W/ WASHER CENTERED ON FLANGE a = 2" c = 6"		WOOD ATTACHMENT (REF. DOUGLAS FIR) USE 1/4" x 3" SIMPSON SDS W/ WASHER, CENTERED ON CURB FLANGE a = 1" c = 3"		CONCRETE ATTACHMENT: (3000 PSI MINIMUM, 6" MINIMUM THICKNESS) (4" MIN EDGE DISTANCE, 3-3/4" EMBEDDED) USE 1/2" SIMPSON TITEN HD CENTERED ON CURB FLANGE, 8" MIN. SPACING a = 3" c = 8"																																																																						
TYPICAL PLAN VIEW a = SPACING @ CORNER ANCHORS		WELD OPTION: (2.5") LONG 1/8" FILLET WELDS ARE PERMITTED TO BE USED IN PLACE OF EACH BOLT INDICATED BY THE STEEL ATTACHMENT DETAIL, EQUALLY SPACED																																																																								
<table border="1"><thead><tr><th rowspan="2">CURB HEIGHT</th><th colspan="3">QTY OF ANCHORS</th><th rowspan="2">TOTAL</th></tr><tr><th>EA. LONG SIDE</th><th>EA. SHORT SIDE</th><th>EA. CORNER</th></tr></thead><tbody><tr><td>UP TO 14"</td><td>1</td><td>1</td><td>2</td><td>12</td></tr><tr><td>UP TO 24"</td><td>1</td><td>1</td><td>2</td><td>12</td></tr><tr><td>UP TO 36"</td><td>1</td><td>1</td><td>4</td><td>20</td></tr></tbody></table>		CURB HEIGHT	QTY OF ANCHORS			TOTAL	EA. LONG SIDE	EA. SHORT SIDE	EA. CORNER	UP TO 14"	1	1	2	12	UP TO 24"	1	1	2	12	UP TO 36"	1	1	4	20	<table border="1"><thead><tr><th rowspan="2">CURB HEIGHT</th><th colspan="3">QTY OF ANCHORS</th><th rowspan="2">TOTAL</th></tr><tr><th>EA. LONG SIDE</th><th>EA. SHORT SIDE</th><th>EA. CORNER</th></tr></thead><tbody><tr><td>UP TO 14"</td><td>7</td><td>4</td><td>4</td><td>38</td></tr><tr><td>UP TO 24"</td><td>8</td><td>5</td><td>4</td><td>42</td></tr><tr><td>UP TO 36"</td><td>10</td><td>5</td><td>6</td><td>54</td></tr></tbody></table>		CURB HEIGHT	QTY OF ANCHORS			TOTAL	EA. LONG SIDE	EA. SHORT SIDE	EA. CORNER	UP TO 14"	7	4	4	38	UP TO 24"	8	5	4	42	UP TO 36"	10	5	6	54	<table border="1"><thead><tr><th rowspan="2">CURB HEIGHT</th><th colspan="3">QTY OF ANCHORS</th><th rowspan="2">TOTAL</th></tr><tr><th>EA. LONG SIDE</th><th>EA. SHORT SIDE</th><th>EA. CORNER</th></tr></thead><tbody><tr><td>UP TO 14"</td><td>3</td><td>1</td><td>2</td><td>16</td></tr><tr><td>UP TO 24"</td><td>3</td><td>1</td><td>2</td><td>16</td></tr><tr><td>UP TO 36"</td><td>3</td><td>1</td><td>4</td><td>24</td></tr></tbody></table>		CURB HEIGHT	QTY OF ANCHORS			TOTAL	EA. LONG SIDE	EA. SHORT SIDE	EA. CORNER	UP TO 14"	3	1	2	16	UP TO 24"	3	1	2	16	UP TO 36"	3	1	4	24
CURB HEIGHT	QTY OF ANCHORS			TOTAL																																																																						
	EA. LONG SIDE	EA. SHORT SIDE	EA. CORNER																																																																							
UP TO 14"	1	1	2	12																																																																						
UP TO 24"	1	1	2	12																																																																						
UP TO 36"	1	1	4	20																																																																						
CURB HEIGHT	QTY OF ANCHORS			TOTAL																																																																						
	EA. LONG SIDE	EA. SHORT SIDE	EA. CORNER																																																																							
UP TO 14"	7	4	4	38																																																																						
UP TO 24"	8	5	4	42																																																																						
UP TO 36"	10	5	6	54																																																																						
CURB HEIGHT	QTY OF ANCHORS			TOTAL																																																																						
	EA. LONG SIDE	EA. SHORT SIDE	EA. CORNER																																																																							
UP TO 14"	3	1	2	16																																																																						
UP TO 24"	3	1	2	16																																																																						
UP TO 36"	3	1	4	24																																																																						
THE INFORMATION CONTAINED IN THIS DRAWING IS THE SOLE PROPERTY OF MICROMETL CORPORATION. ANY REPRODUCTION IN PART OR WHOLE WITHOUT THE WRITTEN PERMISSION OF MICROMETL CORPORATION IS PROHIBITED.																																																																										