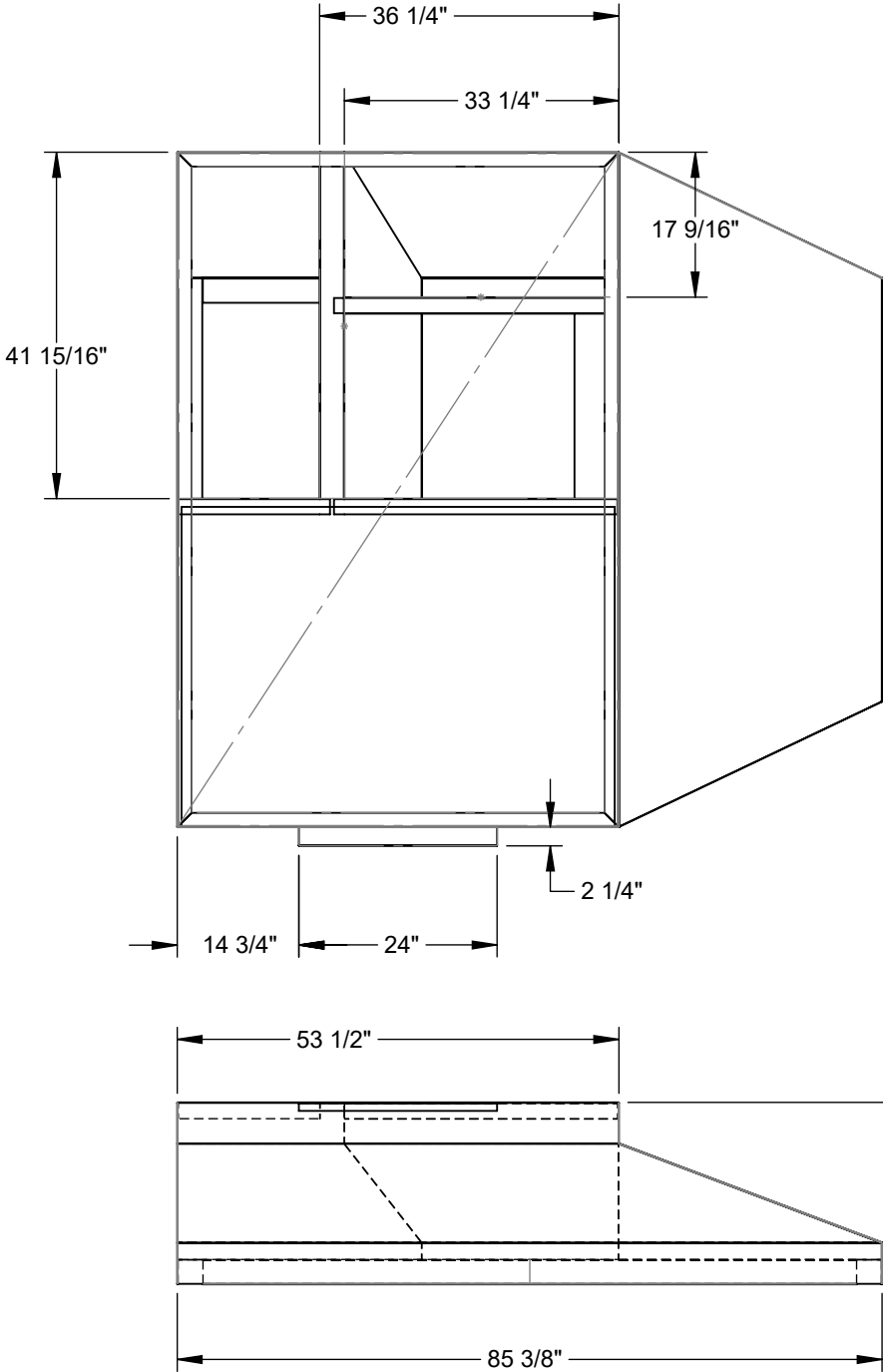


OPTIONS:
INSULATED PANELS (WHERE REQUIRED)
1" 1-1/2LB DUCT INSULATION (R VALUE 3.85)
GASKET PROVIDED WITH CURB

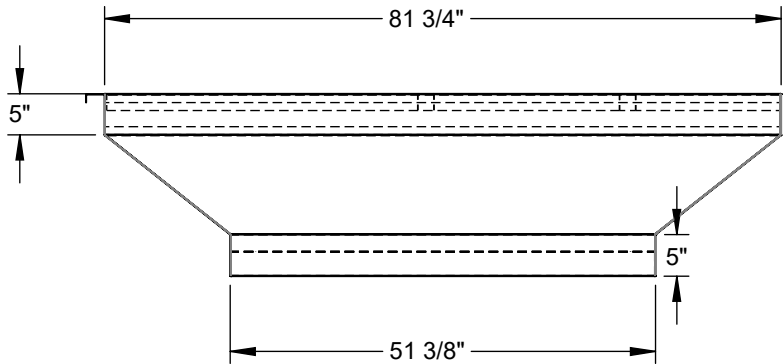
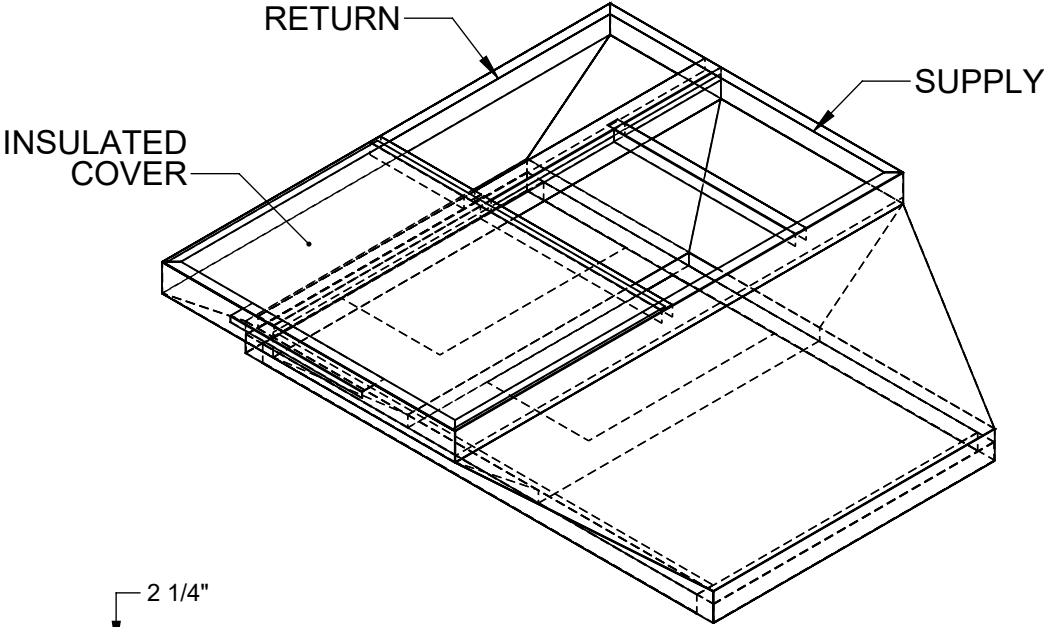
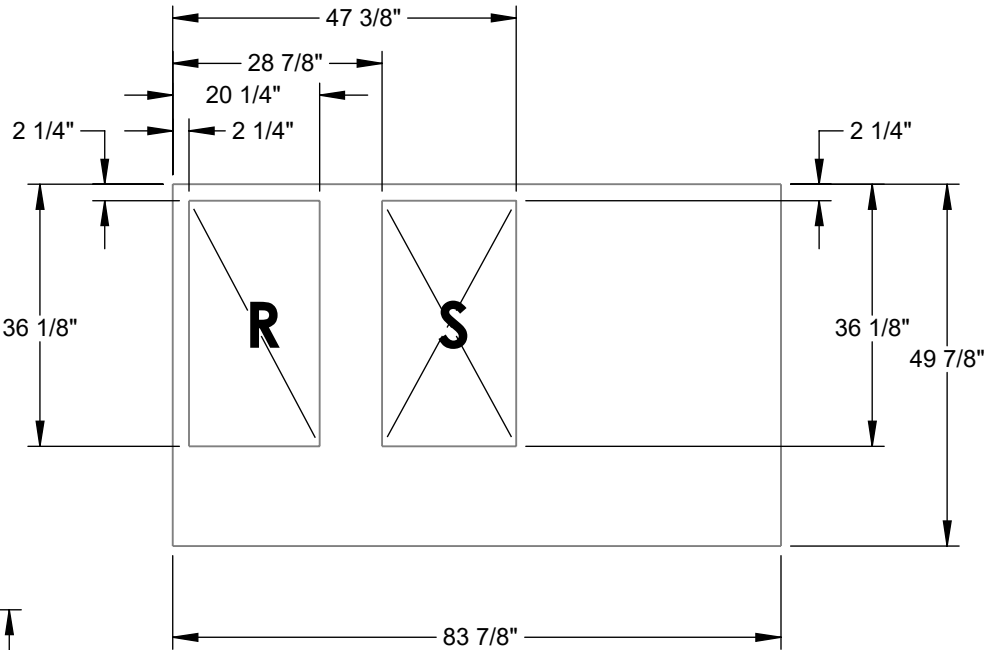
DIMENSIONED AND TOLERENCED PER ANSI Y14.5M-1982

REVISIONS			
REV.	DESCRIPTION	DATE	APPROVED
1	INITIAL DRAWING	12/2/24	JD

Attn: _____
Approval: _____
RTU TAG(S): _____



EXISTING CURB



Material: 18 ga. G-90 Galv Steel
Existing Curb Oversized by: 1.5 Inches
Operational Height(Raise unit by):17 Inches

THIS DRAWING & THE INFORMATION CONTAINED THEREIN IS THE CONFIDENTIAL, PROPRIETARY INFORMATION OF CRYSTAL DISTRIBUTION INC., & MAY NOT BE USED OR REPRODUCED WITHOUT THE APPROVAL OF CRYSTAL DISTRIBUTION, INC. ALL RIGHTS RESERVED		APPROVALS		DATE	TITLE/FILE NAME: 1-3105-4009			
		DRAWN: jdiemert		12/2/2024				
		CHECKED:						
				DIMENSIONS ARE AS FOLLOWS: 1.00 in [25.40 mm]				
*VERIFY EXISTING CURB OD *VERIFY SUPPLY AND RETURN OPENINGS *NOTE ANY CHANGES *CALL WITH ANY QUESTIONS *FAX BACK IF DRAWING IS OK AS IS				Contact us @ www.cdicurbs.com or 1-888-234-7001		APPROXIMATE CURB WEIGHT (LBS.)	ECO #:	REV: 1
						262		
							SCALE: 1:16	SHEET: 1 OF 4