

Louvered Hail Guard Accessory
Gas Heat/Electric Cooling, Electric Cooling and Heat Pump
Select Rooftop Units 15 to 28 Tons

Installation Instructions

Part No. CRLVHLGD017A00, CRLVHLGD018A00, CRLVHLGD019A00,
CRLVHLGD026A00-CRLVHLGD031A00, CRLVHLGD042A00, CRLVHLGD043A00,
CRLVHLGD044A00, CRLVHLGD052A00, CRLVHLGD053A00, CRLVHLGD054A00


IMPORTANT: Read these instructions completely before attempting to install the accessory louvered hail guard.

SAFETY CONSIDERATIONS

Installation of this accessory can be hazardous due to system pressures, electrical components, and equipment location (such as a roof or elevated structure). Only trained, qualified installers and service technicians should install, start-up, and service this equipment.

When installing this accessory, observe precautions in the literature, labels attached to the equipment, and any other safety precautions that apply:

- Follow all safety codes
- Wear safety glasses and work gloves
- Use care in handling and installing this accessory

It is important to recognize safety information. This is the safety-alert symbol: . When you see this symbol on the unit and in instructions or manuals, be alert to the potential for personal injury.

Understand the signal words DANGER, WARNING, CAUTION, and NOTE. These words are used with the safety-alert symbol. DANGER identifies the most serious hazards which **will** result in severe personal injury or death. WARNING signifies hazards which **could** result in personal injury or death. CAUTION is used to identify unsafe practices, which **may** result in minor personal injury or product and property damage. NOTE is used to highlight suggestions which **will** result in enhanced installation, reliability, or operation.

WARNING

ELECTRICAL OPERATION HAZARD

Failure to follow this warning could result in personal injury or death.

Before performing service and maintenance operations on unit, turn off main power switch to unit. If gas unit, shut off gas supply before shutting off main power.

TAG DISCONNECT SWITCH WITH A SUITABLE LOCKOUT TAG AND WARNING LABEL.

GENERAL

Louvered hail guard packages are designed to protect the rooftop unit condenser coil from hail and general contact damage. Excessive damage to rooftop unit outdoor coils can result in diminished performance due to reduced air flow over the heat transfer surfaces.

See Tables 1 and 2 for package contents and usage.

Table 1 — Package Contents

HAIL GUARD PART NO.	QTY	DESCRIPTION
CRLVHLGD017A00 CRLVHLGD018A00	2	Side Panel, Coil
	2	End Panel, Coil
	12	Plastic Grommet
	24	Screws 10AB x 3/4 LG
	4	4- Wire Tie
CRLVHLGD019A00	2	Side Panel, Coil
	2	End Panel, Coil
	18	Plastic Grommet
	30	Screws 10AB x 3/4 LG
	6	Wire Tie
CRLVHLGD026A00 CRLVHLGD027A00	2	Side Panel, Coil
	2	End Panel, Coil
	12	Plastic Grommet
	24	Screws 10AB x 3/4 LG
	4	Wire Tie
CRLVHLGD028A00	2	Side Panel, Coil
	2	End Panel, Coil
	18	Plastic Grommet
	30	Screws 10AB x 3/4 LG
	6	Wire Tie
CRLVHLGD029A00	4	Side Panel, Coil
	2	End Panel, Coil
	18	Plastic Grommet
	30	Screws 10AB x 3/4 LG
	6	Wire Tie
CRLVHLGD030A00	2	Side Panel, Coil
	2	End Panel, Coil
	12	Plastic Grommet
	24	Screws 10AB x 3/4 LG
	4	Wire Tie
CRLVHLGD031A00	2	Side Panel, Coil
	2	End Panel, Coil
	18	Plastic Grommet
	30	Screws 10AB x 3/4 LG
	6	Wire Tie
CRLVHLGD042A00	2	Side Panel, Coil
	2	End Panel, Coil
	16	Plastic Grommet
	16	Screws 10AB x 3/4 LG
CRLVHLGD043A00	2	Side Panel, Coil
	2	End Panel, Coil
	24	Plastic Grommet
	24	Screws 10AB x 3/4 LG

Table 1 — Package Contents (cont)

HAIL GUARD PART NO.	QTY	DESCRIPTION
CRLVHLGD044A00	2	Side Panel 6 Fan Unit, Coil
	2	Side Panel, Coil
	2	End Panel, Coil
	36	Plastic Grommet
	36	Screws 10AB x 3/4 LG
CRLVHLGD052A00	2	Side Panel, Coil
	2	End Panel, Coil
	16	Plastic Grommet
	16	Screws 10AB x 3/4 LG
CRLVHLGD053A00	2	Side Panel, Coil
	2	End Panel, Coil
	24	Plastic Grommet
CRLVHLGD054A00	24	Screws 10AB x 3/4 LG
	2	Side Panel, Coil
	2	End Panel, Coil
	26	Plastic Grommet
	26	Screws 10AB x 3/4 LG

Table 2 — Package Usage

HAIL GUARD PART NO.	MODEL	UNIT SIZE	COIL TYPE
CRLVHLGD017A00	48/50HC	17	Round Tube Plate Fin
	48/50TC	17-20	Round Tube Plate Fin/ MCHX
	50TCQ	17	Round Tube Plate Fin
	580J/558J	17-20	Round Tube Plate Fin/ MCHX
	551J/581J	17	Round Tube Plate Fin
	548J	17	
	RGH/RAH	181-183	
	RGS/RAS	181-214	
CRLVHLGD018A00	RHS	181-183	MCHX
	48/50TC	24	
	580J/558J	24	
CRLVHLGD019A00	48/50TC	28	
	580J/558J	28	Round Tube Plate Fin
CRLVHLGD026A00	50TCQ	24	
	548J	24	
	RHS	240-243	
CRLVHLGD027A00	48/50TC	24	
	580J/558J	24	
	RGS/RAS	240-244	
CRLVHLGD028A00	48/50TC	28	
	580J/558J	28	
	RGS/RAS	300-304	
CRLVHLGD029A00	48/50HC	28	
	48/50TC	30	
	581J/551J	28	
	580J/558J	30	
	RGH/RAH	300-303	
	RGS/RAS	333-336	
CRLVHLGD030A00	48/50HC	20	
	581J/551J	20	
	RGH/RAH	210-213	
CRLVHLGD031A00	48/50HC	24	
	581J/551J	24	
	RGH/RAH	240-243	
CRLVHLGD042A00	48/50FC	20	
	50FCQ	17	
	582K/559K	20	
	547K	17	
	RGV/RAV	210	
	RHV	181	

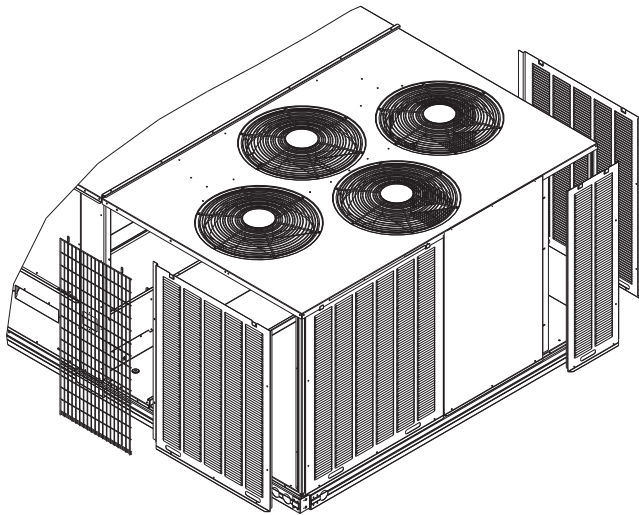
Table 2 — Package Usage (cont)

HAIL GUARD PART NO.	MODEL	UNIT SIZE	COIL TYPE
CRLVHLGD043A00	50FCQ	28	Round Tube Plate Fin
	48/50GC	24	
	50GCQ	24	
	547K	28	
	581K/551K	24	
	549K	24	
	RHV	300	
	RGW/RAW	300	
	RHW	240	
CRLVHLGD044A00	48/50GC	28	
	50GCQ	28	
	581K/551K	28	
	549K	28	
	RGW/RAW	300	
CRLVHLGD052A00	RHW	300	
	48/50FC	24	
	50FCQ	24	
	48/50GC	20	
	50GCQ	17	
	582K/559K	24	
	547K	24	
	581K/551K	20	
CRLVHLGD053A00	549K	17	
	RGV/RAV	240	
	RHV	240	
	RGW/RAW	210	
	RHW	181	
	48/50FC	28	
CRLVHLGD054A00	582K/559K	28	
	RGV/RAV	300	
	48/50FC	30	
CRLVHLGD054A00	582K/559K	30	
	RGV/RAV	336	

NOTE: Not all unit sizes may be available at this time.

INSTALLATION

1. Verify the correct hail guard part number is provided for the desired rooftop unit size. See Package Usage table.
2. Remove shipping covers from unit.
3. Remove wire grills from unit and save screws. For 3 and 4 fan units see Fig. 1. For 6 fan units see Fig. 2.
4. Insert (4) plastic grommets in the square holes of each corner post as shown in Fig. 3.
5. Insert 2 plastic grommets in the square holes of the two side guards of the kit. (See Fig. 4.)
6. Using screws provided with kit, install end panels. Engage top notch in each panel to top cover flange as shown in Fig. 5. Drive screws through panel and into basepan and plastic grommets in post.
7. Install side panels engaging notch in top of panel as shown in Fig. 5. Install screws through panel into basepan and grommets previously installed.
8. Re-install wire guards using wire ties provided in kit. Wrap wire tie around spine of grill, aligning hole in wire tie with plastic grommet. Secure with screws from kit.
9. Restore power to unit.



**Fig. 1 — Hail Guard Installation – 3 and 4 Fan Units
(4 Fan Unit Shown)**

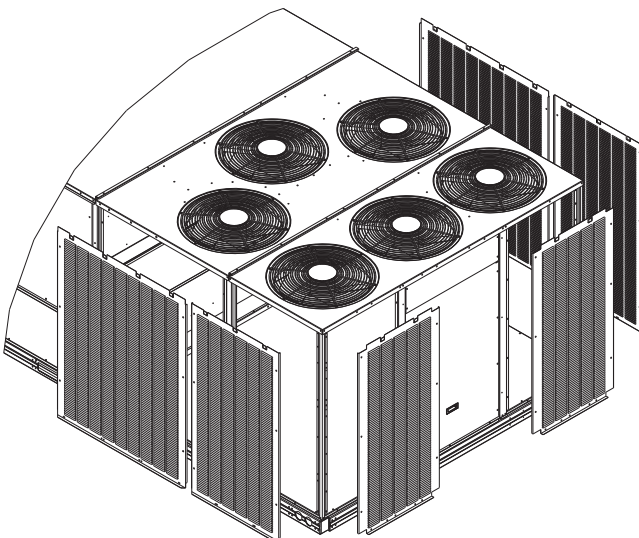


Fig. 2 — Hail Guard Installation – 6 Fan Units

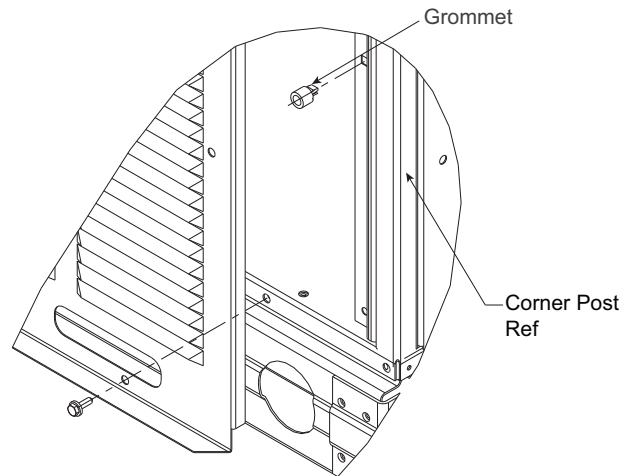


Fig. 3 — Grommets in Corner Post

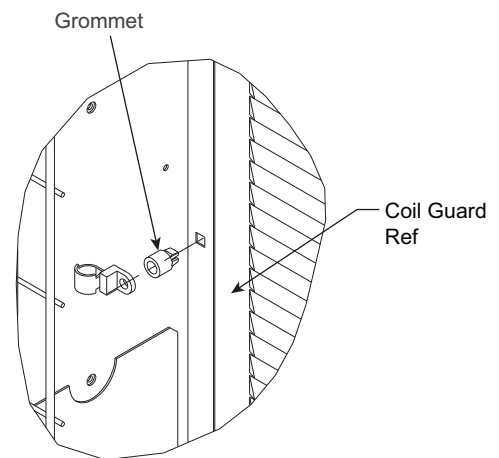


Fig. 4 — Grommets in Side Guards

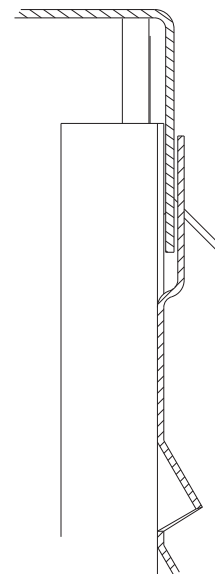


Fig. 5 — Side Panels Installed on Top of Panel

