

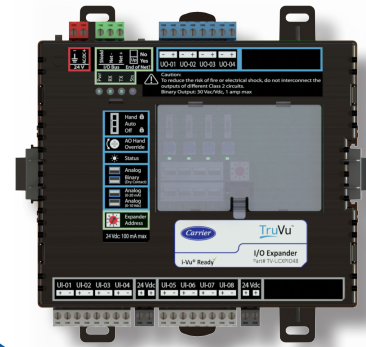


# i-Vu® Building Automation System

## TruVu™ UCXP I/O Expander

Part Number: TV-UCXPIO48

TruVu



The Carrier TruVu™ UCXP I/O expander provides up to 12 additional I/O points for the TruVu UCXP683T and TruVu UCXP683T-V controllers. Flexible and versatile, the TruVu UCXP controller and expander combine to accomplish both common and custom HVAC control strategies.



### Application Features

- Comprehensive library of factory-engineered control programs available for complete air-side and water-side system control
- Graphically programmable using the Snap programming tool

### Hardware Features

- Adds up to 4 outputs and 8 inputs (12 points total), to a TV-UCXP controller
- Removable screw terminals for I/O connections
- Supports din-rail or screw tab mounting
- Hand-Auto-Off switches on all output channels
- Software selectable configuration - no jumpers
- Expanders can be mounted to TV-UCXP in a compact configuration or remotely mounted up to 1000 feet away

### System Benefits

- Integrated Carrier linkage algorithm for plug-and-play integration with Carrier systems
- Fully plug-and-play with the Carrier i-Vu® Building Automation System
- Supports demand limiting for maximum energy savings

### Sample Applications



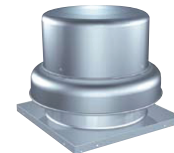
AHUs



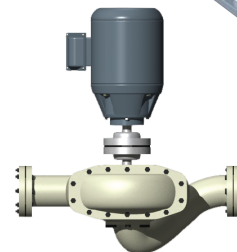
Boilers



Lighting



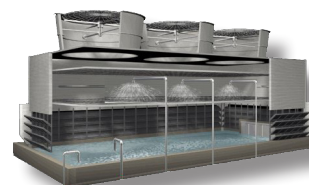
Exhaust Fans



Water Loop Control



Meters



Cooling Towers



Chillers

# i-Vu® Building Automation System

## TruVu™ UCXP I/O Expander

Part Number: TV-UCXP1048



### Specifications

<b>Communication Ports</b>	<b>IO Bus port:</b> Provides communication to a wired TruVu UCXP I/O expander that is powered by an external power supply.
<b>Inputs</b>	<p>8 inputs</p> <ul style="list-style-type: none"> <li>-Inputs software configurable for 0-5 VDC, 0-10 VDC, 0-20 mA, thermistor, dry contact, or pulse counter</li> <li>-Inputs are 16 bit A/D and support up to 40 pulses per second (12.5 msec per pulse).</li> </ul>
<b>Outputs</b>	<p>4 outputs</p> <ul style="list-style-type: none"> <li>- Outputs can be set as analog or binary outputs.</li> <li>- Analog outputs can be used for 0-10 VDC or 0-20 mA (12 bit A/D).</li> <li>- Binary outputs have a built-in relay and can be used to switch external devices or relays up to 1A, 30VAC/VDC.</li> </ul>
<b>Protection</b>	<p>Two fast acting, 5mm x 20mm glass fuses:</p> <ul style="list-style-type: none"> <li>-A 2A fuse for the TV-UCXP10 expander's power</li> <li>-<b>Physical:</b> Fire-retardant plastic ABS, UL94-5VA</li> </ul>
<b>Status Indicators</b>	LED status of communications, power, running, errors, and outputs
<b>Compliance</b>	<p><b>United States:</b> FCC compliant to Title CFR47, Part 15, Subpart B, Class A; UL Listed, File E143900; CCN PAZX, UL916, Energy Management Equipment; <b>AS/NZS:</b> RCM Mark, IEC 61000-6-3; <b>Canada:</b> UL Listed File E143900, CCN PAZX7, CAN/CSA C22.2 No. 205 Signal Equip., Industry Canada Compliant ICES-003, Class A; <b>CE Mark</b> Compliant with 2014/30/EU, and RoHS Compliant: 2015/863/EU; <b>UKCA Mark</b> compliant with Electromagnetic Compatibility Regulations 2016 – Gov.UK and RoHS for Electrical and Electronic Equipment 2012, REACH compliant</p>
<b>Environmental Operating Range</b>	<p><b>Operating:</b> -40 to 158°F (-40 to 70°C), 10 to 95% RH, non-condensing.</p> <p><b>NOTE:</b> Install in a UL listed enclosure only.</p>
<b>Power Requirements</b>	<p>24VAC ± 10%, 50-60Hz</p> <p>50 VA power consumption</p> <p>26VDC ± 10%, 12W</p>

### Dimensions

#### Overall

**A:** 6.9 in. (17.53 cm)

**B:** 6.95 in. (17.65 cm)

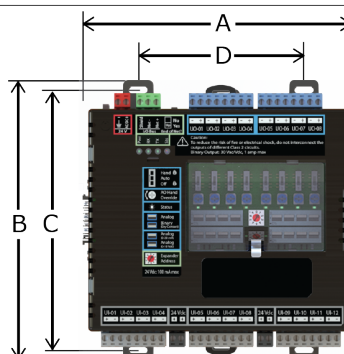
#### Mounting

**C:** 6.45 in. (16.38 cm)

**D:** 4.1 in. (10.4 cm)

**Depth:** 2.09 in. (5.31 cm)

**Weight:** 1.1 lbs (0.49 kg)



For more information, contact your local Carrier Controls Expert.

Controls Expert Locator:

[www.carrier.com/controls-experts](http://www.carrier.com/controls-experts)