



Date:

Weight: 65lbs (US) 29.48kg (Metric)

Part Number: CRBK-SPPLGHA-111H

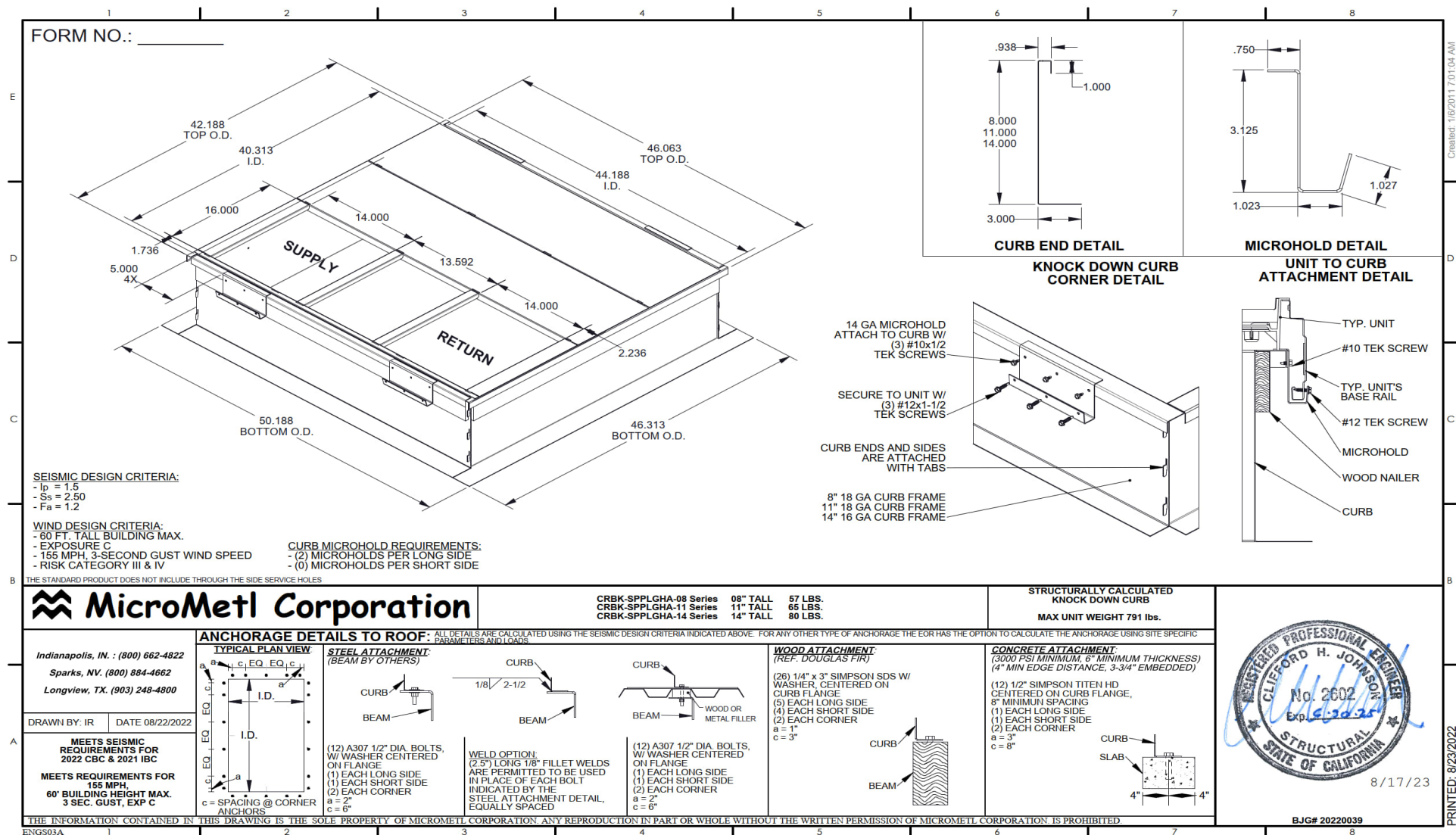
RTU:

Submitted to:

Approved by:

Notes:

Knockdown Structurally Calculated Curb - 11 Inches Tall Non Insulated Full Perimeter Knockdown Structurally Calculated Curb, California State Standard, High Seismic Criteria, Includes Hold-Down Brackets. "Structurally" Stamped By A Professional Engineer, Without Pitch, Insulated Deck Pan If Applicable, Includes Wood Nailer & Hold Down Brackets. Meets Seismic Requirements for 2022 CBC & 2021 IBC. Wind Design Criteria: 60 Foot Tall Building Maximum, Exposure C, 155 MPH - 3 Second Gust Speed, Risk Category III & IV.



This Document Is The Property Of MicroMetl Corporation And Is Delivered Upon The Express Condition That The Contents Will Not Be Disclosed Or Used Without MicroMetl's Written Consent.
MicroMetl Reserves The Right To Discontinue, Or Change At Any Time, Specifications & Designs Without Any Notice Incurring Obligations.

Master Revision 0001A

Page Revision 0001A

Indianapolis_3035 N. Shadeland Ave., Indianapolis, IN 46226_800.MMC.HVAC • Sparks_905 Southern Way, Sparks, NV 89431_800.884.4MMC • Longview_201 Kodak Blvd., Longview, TX 75602_903.248.4800