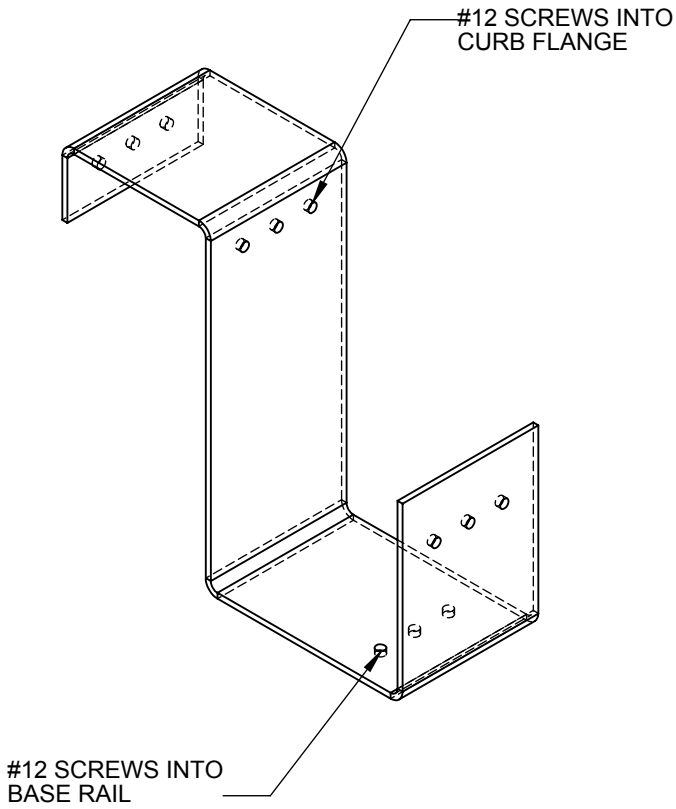
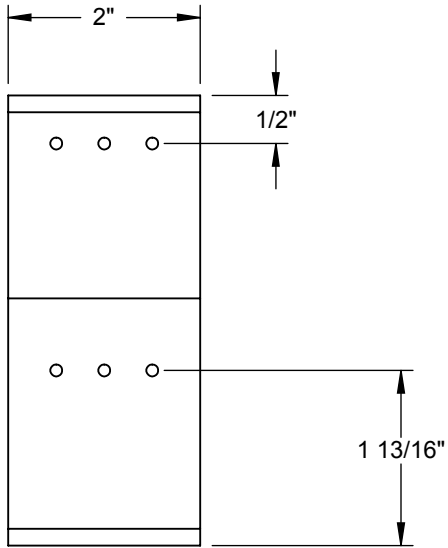
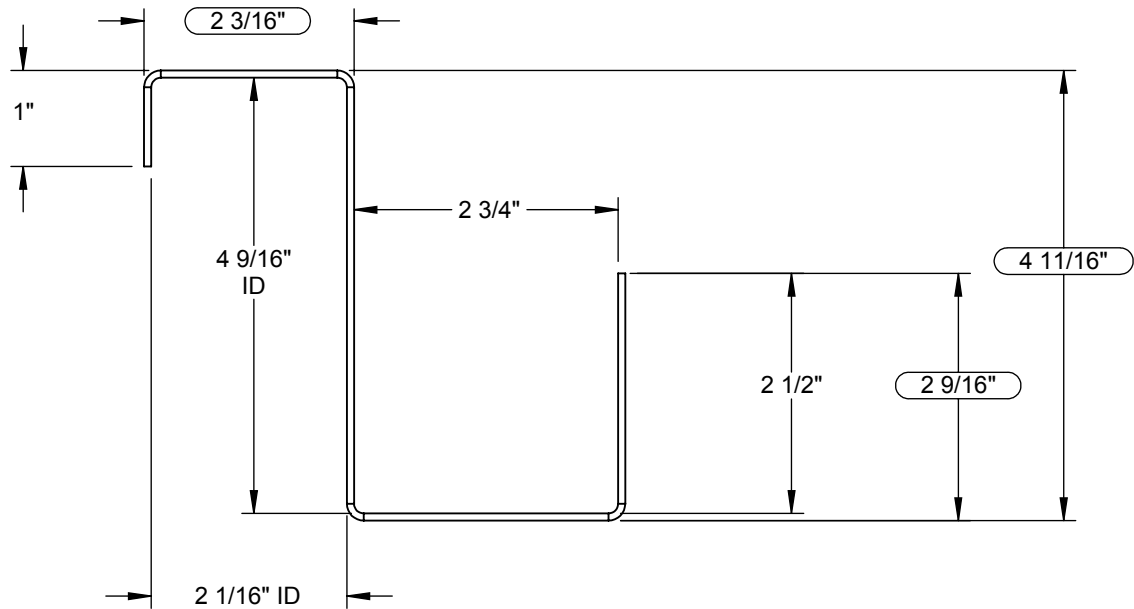


Attn: \_\_\_\_\_ Tag: \_\_\_\_\_

Approval: \_\_\_\_\_

WHEN USING WITH 4000  
3 Per Long Side, 6 total.



Notes:  
1. MATERIAL: 14 ga. GALVANIZED STEEL

CURB SHOWN IS CDI STANDARD CONFIGURATION  
CDI RESERVES THE RIGHT TO CHANGE LAYOUT  
WITHOUT NOTIFICATION. IF CURB IS NEEDED IN A  
DIFFERENT CONFIGURATION CDI MUST BE NOTIFIED  
PRIOR TO PLACING AN ORDER.

\*VERIFY EXISTING CURB OD  
\*VERIFY SUPPLY AND RETURN OPENINGS  
\*NOTE ANY CHANGES  
\*CALL WITH ANY QUESTIONS  
\*FAX BACK IF DRAWING IS OK AS IS

CURB WEIGHT (LBS.)	APPROVALS	DATE	TITLE:		
	DRAWN: <a href="#">Ehanson</a>	2/24/2014	4000-4005 S-CLIP		
	CHECKED:				
UNLESS OTHERWISE SPECIFIED, TOLERANCES ARE:	MGMT:		FILE NAME:	DRAWING NO.:	REV:
.X ± 0.05 .XX ± 0.03 .XXX ± 0.01			4000-4005 S-CLIP		
DIMENSIONS ARE AS FOLLOWS: 1.00 in [25.40 mm]	3RD ANGLE PROJECTION		ECO #:	SCALE: 1:2	SHEET: 1 OF 2
			CDI 9560 85TH AVE. N. MAPLE GROVE, MN 55369 (763)391-7790 (763)391-7851		