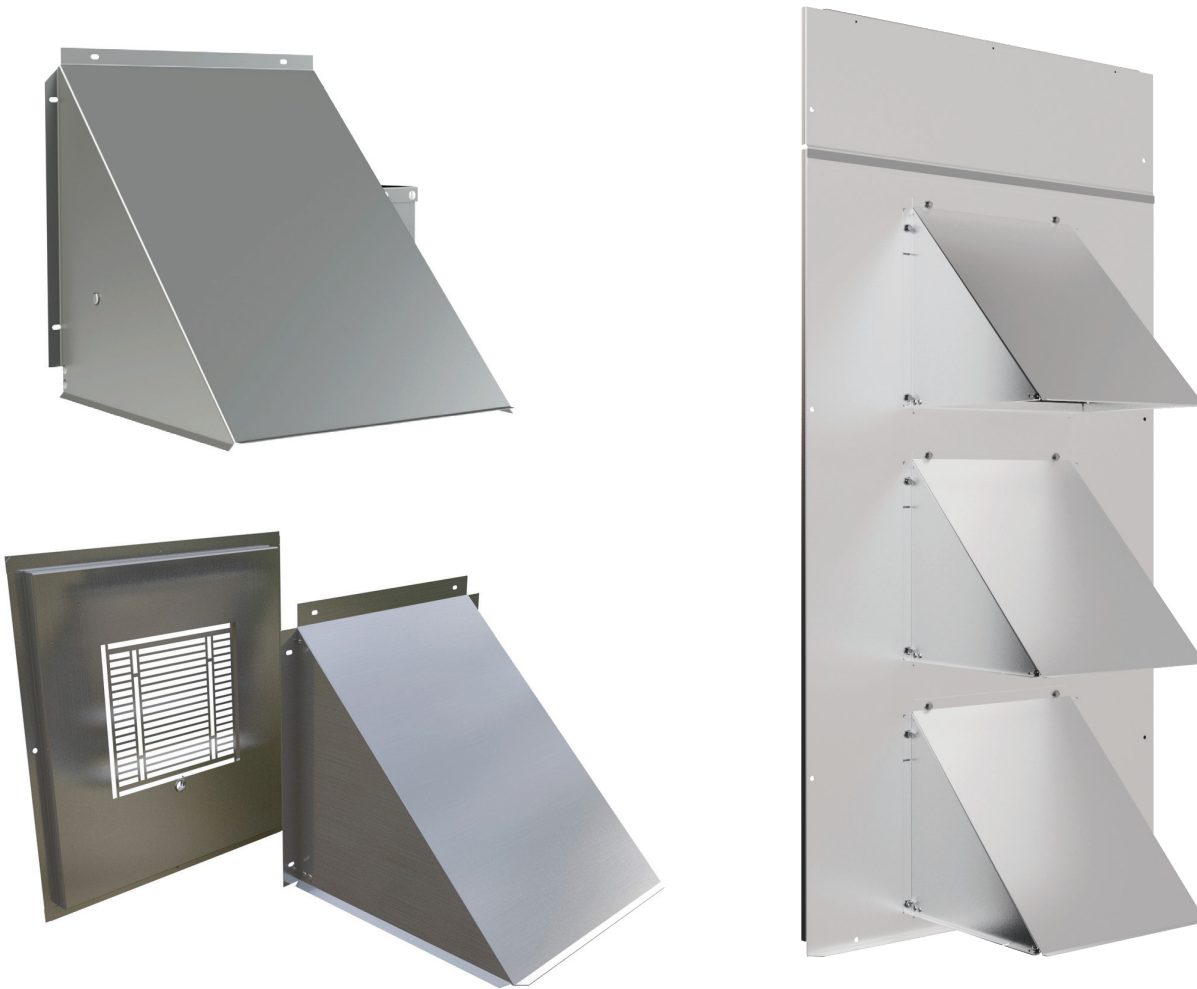




ALL phases of this installation must comply with NATIONAL, STATE, AND LOCAL CODES

INSPECTION:

Check carefully for any shipping damage. This must be reported to and claims made against the transportation company immediately. Any missing parts should be reported to your supplier at once and replaced with authorized parts only.



HOOD TYPE PURPOSE:

Barometric – This Hood is designed to relieve excessive positive building pressure.

Manual – Used to manually adjust the amount of air entering a RTU, or the like by way of incremental damper settings. It is advised to measure airflow using properly calibrated airflow equipment to assure proper airflow balance and operation of your RTU.

Motorized – Used to automatically adjust the amount of air entering a RTU, or the like by use of a motorized fixed, or variable positioning damper connected to a 24 Volt AC Motor or Actuator. It is advised to measure airflow using properly calibrated airflow equipment to assure proper airflow balance and operation of your RTU.

Dimensions "A" & "B." The Hood can be mounted to a wall, duct,

GENERAL INSTALLATION NOTES:

Although some hoods are manufactured to specifically fit a Rooftop Unit (RTU), Hoods can be mounted to a wall, duct, or RTU.

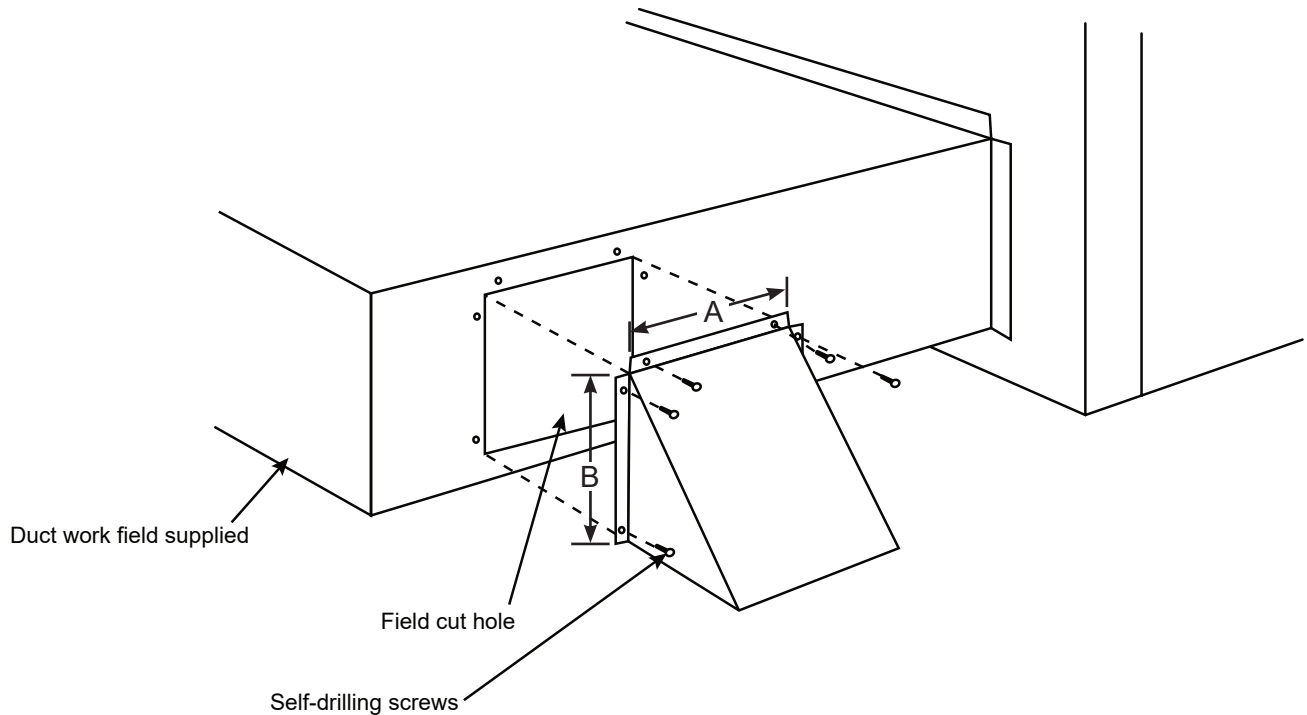
Do not rack the hood, or install at an angle. Racking the hood is defined as "The distortion of a rectangular shape to a skewed parallelogram." All Hoods should be mounted level and squarely. The inside blade should freely open and close without contacting the inside of the hood. If the blade is contacting the inside wall of the hood, reposition the hood, do not alter, or cut the hood to remove the interference.

PRE-PAINTED AT FACTORY:

All Hoods are painted to match the Manufacturers Specifications. When choosing a "Generic" style hood, the color will default to the color of the chosen "Brand." Please be certain to choose the color which best fits your application.

HOOD INSTALLATION PROCEEDURE – CUTTING AN OPENING:

When attaching the hood to a solid metal surface, cut a hole just slightly smaller than the size of the hood opening as illustrated by Dimensions "A" & "B". The Hood can be mounted to a wall, duct, or RTU.



FILTERS, SCREENS & PROVIDED PANELS:

Some hood applications come from the factory with optionally provided Aluminum filters. Do not use paper or fiberglass filters as replacements. Replace these with only like style filters.



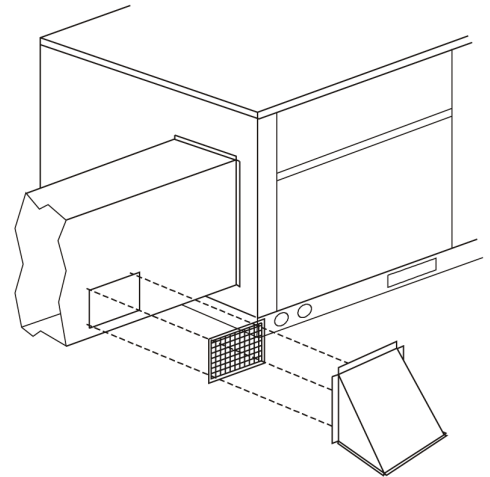
Aluminum Filter

Under some circumstances panels containing metal grid screen are factory provided. These panels in whole are provided to fit the opening of a specific RTU. Under this circumstance, install the entire panel, followed by installing the hood over the grid using pre-punched factory guided holes. Self-Drilling sheet metal screws are provided. Additional "Filter Panels" may be provided to allow the hood to be more generic. If a filler panel is provided but not obviously required, you may discard it and the conclusion of the installation.

When using the hood in a horizontal application, the metal grid can be cut out of the panel and installed into a wall, ductwork or the like. Self-Drilling sheet metal screws are provided. Caution... the removed grid will contain sharp edges and should be handled with gloves, and caution.

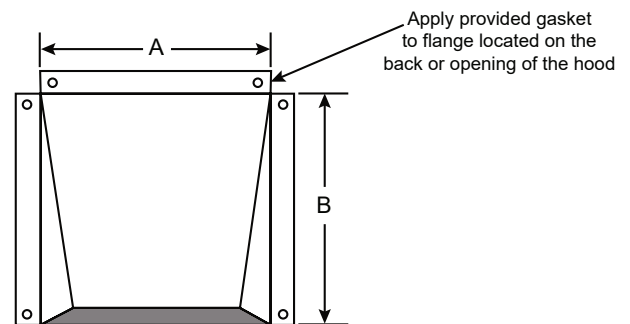
Horizontal Application

(Cover panel is not used in horizontal application).



SEALING THE HOOD:

Apply the Provided Gasket to each flange located on the back, or opening of the hood. Caulk the hood when the installation is completed.



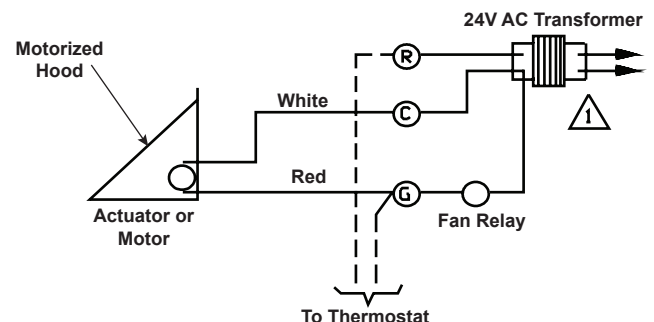
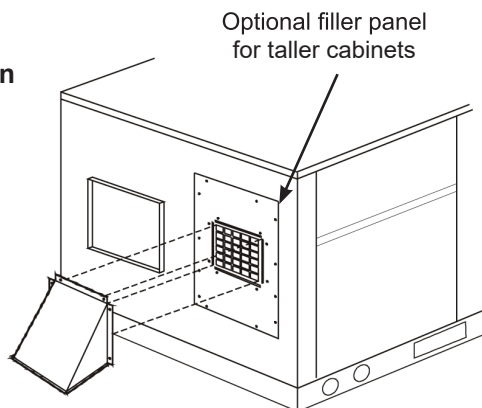
Rear View

ELECTRICAL & WIRING:

MicroMetl Motorized Hoods require a 24 Volt AC source. The source must have at least 10VA available to operate the motor. A 24 Volt AC Transformer is not supplied.

A wiring harness is provided. Be certain to install the wiring according to National, State and Local Codes. Always refer electrical concerns to qualified, licensed personnel only!

Downshot Application



POST INSTALLATION:

Be certain to maintain your new Hood. Clean any debris which may affect the Barometric/Manual/Motorized Damper Blade from fully opening, or properly sealing when closed.

MicroMetl Indianapolis
3035 N. Shadeland Ave.,
Suite 300 Indianapolis, IN 46226

MicroMetl Longview
201 Kodak Blvd.
Longview, Texas 75602

MicroMetl West
905 Southern Way
Sparks, Nevada 89431

Manufacturer reserves the right to discontinue, or change at any time, specifications, designs and prices without notice and without incurring obligations.
Copyright MicroMetl Corporation 2016 All rights reserved.