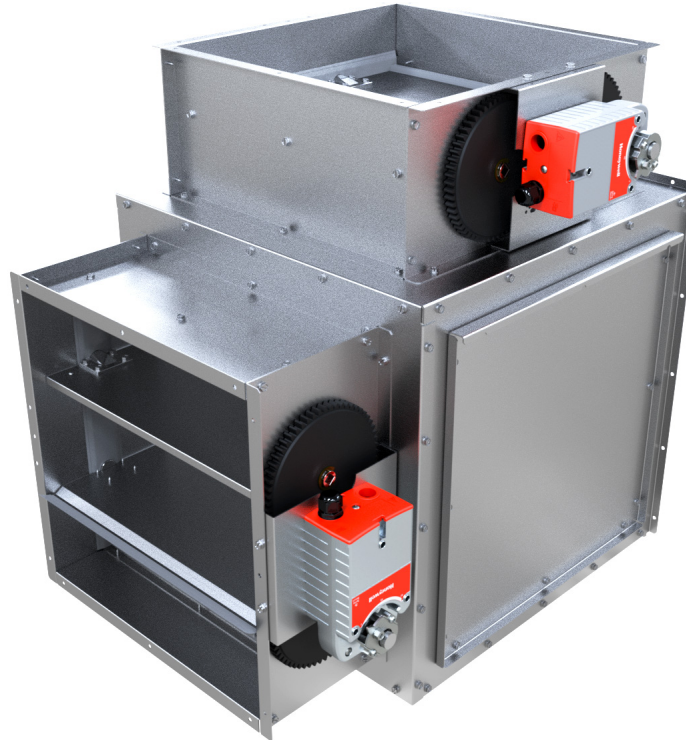




MicroMetl

Spec Sheet

Mixing Box-Cube: MB-GP20CB-D2DH



Refer To Submittal For Dimensions

Description: Mixing Box - CUBE - 1500-2000 CFM , Ultra Low Leak Genesis Fault Detection & Diagnostic Controls - Honeywell Jade W7220 Controller, Adjustable Dry Bulb Sensor, Honeywell Actuator, Galvanized Metal With Gears Comprised of Polybutylene Terephthalate (PBT) Flame Retardant 30% Glass Filled , Barometric Relief NOT Included. Field

Manufacturer: MicroMetl

Weight: 72lbs/32.66kg

See Submittal for Static Pressure Chart.

CFM Size: 1500-2000 CFM

Leakage Compliance: Ultra Low Leak Genesis

Certification: AMCA Class 1A Certified

Frame Gauge: 18.00

Blade Gauge: 18.00

Control Box Gauge: 20.00

Combined Size: 23.50 Inches Wide X 23.50 Inches High X 23.50 Inches Deep With Damper I.D. Dimensions of 18.00 Inches Wide

Control Type: Fault Detection & Diagnostic Controls

Controller: Honeywell Jade W7220 Controller

Energy Module Included: No

Sensor Type: Adjustable Dry Bulb Sensor

Actuator Type: Honeywell Actuator

Quantity: 1

Quantity: 2

Prop 65:

Country of Origin: USA