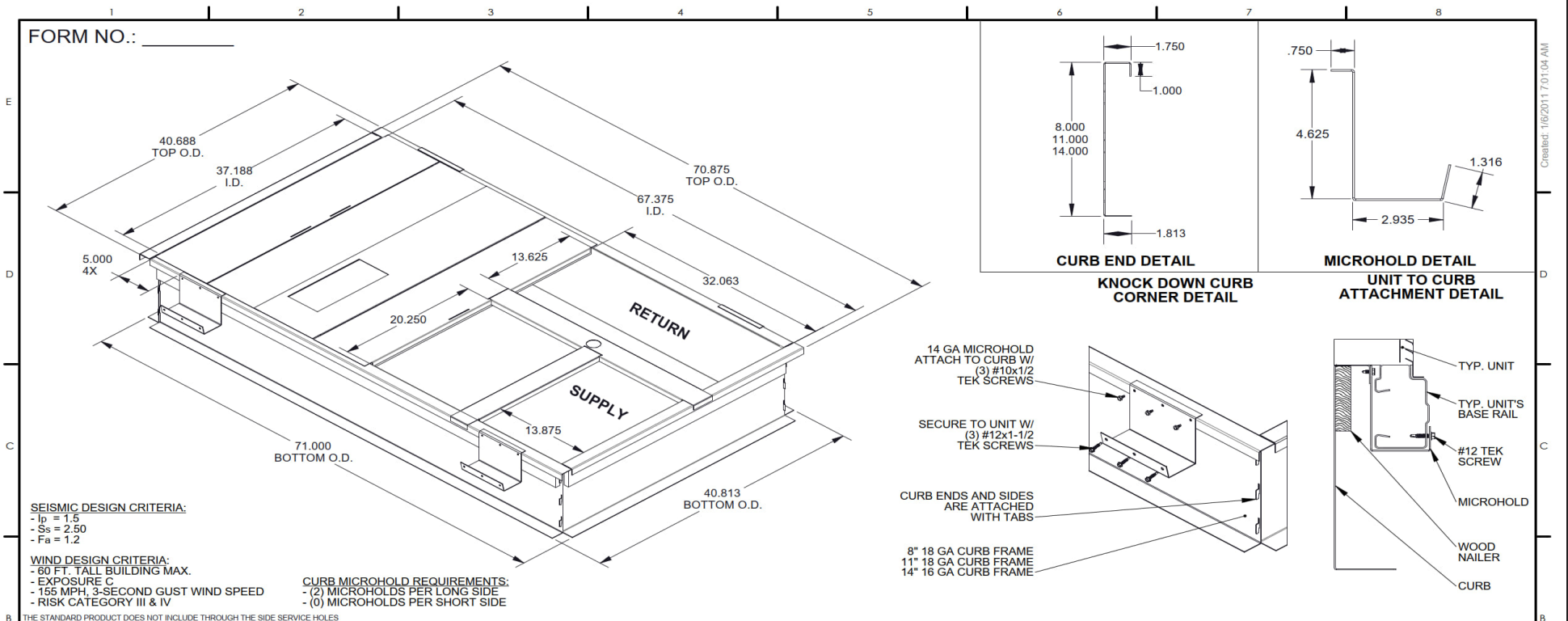




Date:	Weight: 98lbs (US) 44.45kg (Metric)	Part Number: CRBK-SRT12HA-1411
RTU:		

Submitted to:	Approved by:	Notes:
---------------	--------------	--------

Knockdown Structurally Calculated Curb - 14 Inches Tall Non Insulated Full Perimeter Knockdown Structurally Calculated Curb, California State Standard, High Seismic Criteria, Includes Hold-Down Brackets. "Structurally" Stamped By A Professional Engineer, Without Pitch, Insulated Deck Pan If Applicable, Includes Wood Nailer & Hold Down Brackets. Meets Seismic Requirements for 2022 CBC & 2021 IBC. Wind Design Criteria: 60 Foot Tall Building Maximum, Exposure C, 155 MPH - 3 Second Gust Speed, Risk Category III & IV.



MicroMetl Corporation		CRBK-SRT12HA-08 Series 08" TALL 69 LBS. CRBK-SRT12HA-11 Series 11" TALL 87 LBS. CRBK-SRT12HA-14 Series 14" TALL 98 LBS.		STRUCTURALLY CALCULATED KNOCK DOWN CURB MAX UNIT WEIGHT 1099 lbs.		 7/6/23 BJG# 20220039
Indianapolis, IN.: (800) 662-4822 Sparks, NV. (800) 884-4662 Longview, TX. (903) 248-4800		ANCHORAGE DETAILS TO ROOF: ALL DETAILS ARE CALCULATED USING THE SEISMIC DESIGN CRITERIA INDICATED ABOVE. FOR ANY OTHER TYPE OF ANCHORAGE THE EOR HAS THE OPTION TO CALCULATE THE ANCHORAGE USING SITE SPECIFIC PARAMETERS AND LOADS.		WOOD ATTACHMENT (REF. DOUGLAS FIR) (36) 1/4" x 3" SIMPSON SDS W/ WASHER, CENTERED ON CURB FLANGE (7) EACH LONG SIDE (3) EACH SHORT SIDE (4) EACH CORNER $a = 1"$ $c = 3"$		
DRAWN BY: IR DATE: 08/24/2022 MEETS SEISMIC REQUIREMENTS FOR 2022 CBC & 2021 IBC MEETS REQUIREMENTS FOR 155 MPH, 60' BUILDING HEIGHT MAX. 3 SEC. GUST, EXP C		STEEL ATTACHMENT (BEAM BY OTHERS) WELD OPTION: (2.5") LONG 1/8" FILLET WELDS ARE PERMITTED TO BE USED IN PLACE OF EACH BOLT INDICATED BY THE STEEL ATTACHMENT DETAIL, EQUALLY SPACED		CONCRETE ATTACHMENT (3000 PSI MINIMUM, 6" MINIMUM THICKNESS) (4" MIN EDGE DISTANCE, 3-3/4" EMBEDDED) (12) 1/2" SIMPSON TITEN HD CENTERED ON CURB FLANGE, 8" MINIMUM SPACING (1) EACH LONG SIDE (1) EACH SHORT SIDE (2) EACH CORNER $a = 3"$ $c = 8"$		