



i-Vu® Building Automation System OnGuard® Integration Add-on

HVAC Schedule Optimization (Part# ADD-OG-AOS)



The OnGuard integration allows the i-Vu building automation system and an OnGuard security system to work together. The OnGuard integration solution consists of three add-ons that you can purchase based on your integration needs.

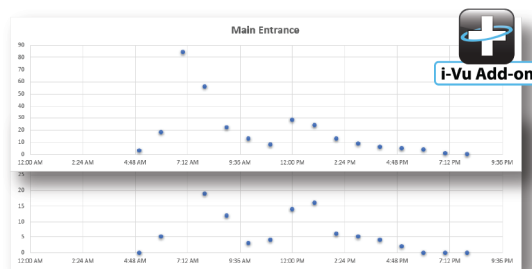
It starts with the Data Connector add-on, which provides the basic communication connection that is needed to transfer data to and from the OnGuard system. The Data Connector is a required component for the HVAC Schedule Optimization add-on.

The HVAC Schedule Optimization add-on predicts and schedules occupancy based on data that comes from the OnGuard system, which promotes optimized energy usage and occupant comfort.



Collect Access Data

HVAC Schedule Optimization



Trend > Analyze > Predict

i-Vu Pro



Execute Optimized Schedule

Key Features and Benefits

- **Optimal Start Coupling** - Supports comfort at typical occupancy, and covers "early birds".
- **Rolling Average by "Day of Week"** - Evaluates each day of the week separately to account for daily variances.
- **Dynamic Assessment** - Responds to changes in occupancy profiles over time.
- **Exception Handling** - Analyzes data for unusual occupancy patterns such as holidays and discards them to avoid influencing predictions.

Compatibility

- i-Vu Pro v8.0 or newer
- Building Integration Platform 1.11 or newer
- OnGuard version must be:
 - v7.5 or later, using the OpenAccess interface
- See requirements in OnGuard v1.1 Integration guide for more details
- Requires Data Connector add-on (Part# ADD-OG-DIP)

For more information, contact
your local Carrier Controls Expert.
Controls Expert Locator:
www.carrier.com/controls-experts

i-Vu Building Automation System

OnGuard Integration Add-on

HVAC Schedule Optimization



Server Configuration

Occupancy

Alarms

Scheduling

Zone

first floor

START

STOP

Write Schedules

ON

Reset All Occupancy Data

Schedules

Config

Destinations

lenel_og_occ_msv

Destination

Areas and Equipment

OnGuard_new

Scheduling Groups

Server Configuration

Occupancy

Alarms

Scheduling

Zone

First Floor

START

STOP

Second Floor

START

STOP

Write Schedules

ON

Reset All Occupancy Data

Schedules

Config

Algorithm

Occupancy_Scher

Occupancy Percent

10

Start Time

FIXED

08:00

Stop Time

PREDICTED

Destinations

Prediction History

Date	Start	Stop
19 Nov 2019	21:40	23:59
20 Nov 2019	00:20	23:55
21 Nov 2019	00:35	23:40
22 Nov 2019	00:20	23:50
Invalid	xxxx	xxxx
24 Nov 2019	00:00	00:00
25 Nov 2019	15:30	23:50
26 Nov 2019	00:20	19:00
27 Nov 2019	08:00	23:55

Export Predictions