

# IRF 150 T

INLINE MIXED FLOW REVERSIBLE FAN  
WITH BUILT-IN TIMER  
for air Exhaust and Supply

COMPLEX PROBLEMS  
ONE SIMPLE SOLUTION



## MIXED FLOW REVERSIBLE FAN WITH BUILT-IN TIMER

SOLUTION FOR RESIDENTIAL  
VENTILATION



# fartt

fresh air reversible & transfer fans

WWW.FARTF.COM



**HVI**  
MEMBER™



**IRF 150 T FAN is designed to handle your FRESH AIR and BATHROOM EXHAUST needs**



### **Why FARTF IRF 150 T ?**

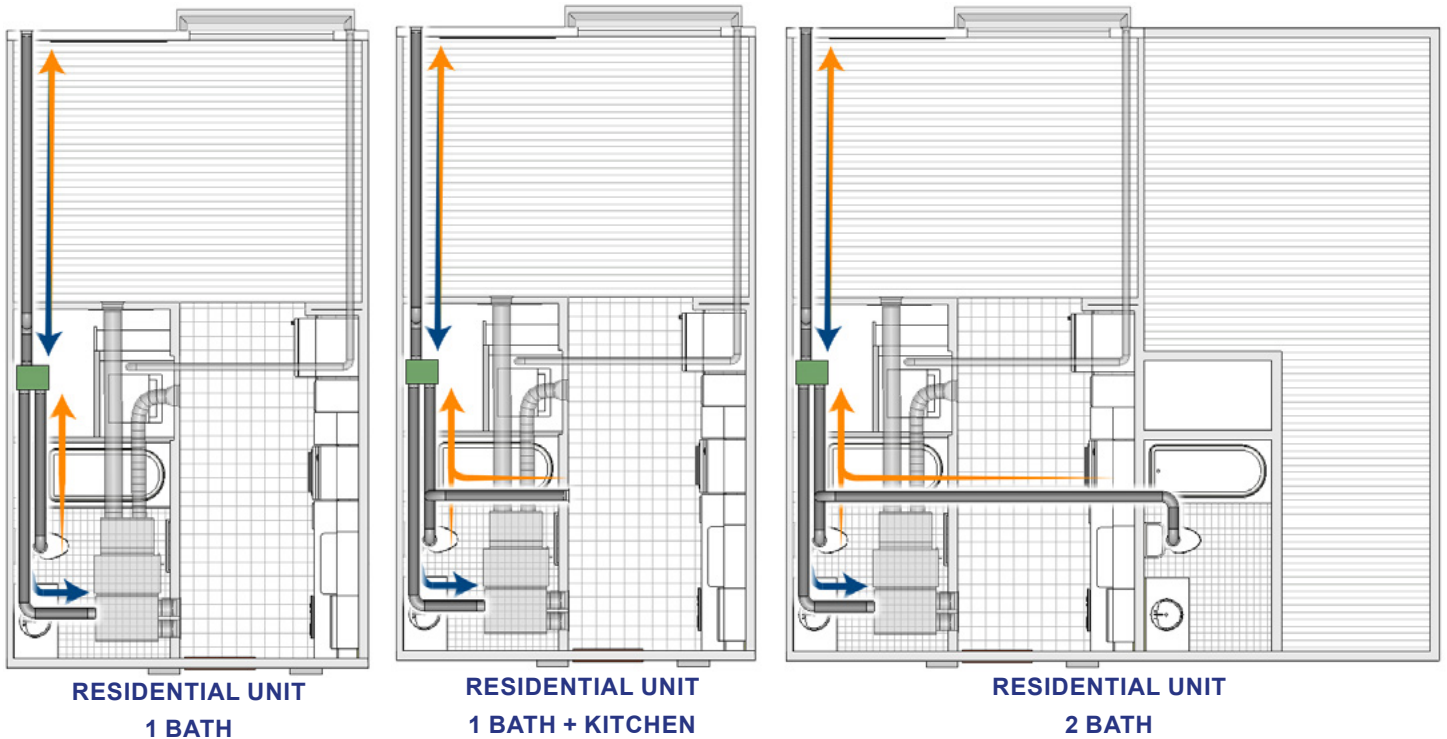
- One fan providing ventilation for bathrooms, kitchen (when applicable), and ASHRAE fresh air requirements.
- One duct replacing the bathrooms, kitchen (when applicable) and outside air ducts.
- Penetrations to the exterior for bathrooms, kitchen (when applicable) & OSA will be reduced to only one.
- The amount of Drop ceilings will be reduced due to eliminating ducts.
- The amount of Lined joist bays will be reduced due to eliminating ducts.
- Eliminates clearance requirements between outside air and bathrooms/kitchen (low rise).
- Three-year warranty from time of installation.

## **ENERGY EFFICIENT INLINE REVERSIBLE FAN WITH BUILT-IN TIMER**

### **BENEFITS**

- HIGH PERFORMANCE: **up to 204 CFM**
- ENERGY EFFICIENT: **37.7 W**
- DUCT COMPATIBILITY: **Ø 6"**
- ONE FAN FOR SUPPLY AND EXHAUST NEEDS
- ONE DUCT TO DISCHARGE AND SUPPLY
- MOTOR WITH THERMAL OVERLOAD PROTECTION
- LONG-LIFE BALL BEARING (up to 40 000 hours)
- BUILT IN AUTOMATIC CONTROL BOARD
- BUILT-IN CYCLIC TIMER (FROM 0 TO 60 MIN)
- LED ALARM INDICATION WITH AUDIO SIGNAL
- BUILT-IN SERVICE DOOR FOR EASY MAINTENANCE
- COMPACT SIZE FOR LIMITED SPACES
- VIBRATION FREE OPERATION
- CORROSION FREE
- EASY INSTALLATION
- ETL / HVI / ENERGY STAR LISTED

## APPLICATION EXAMPLE



## INNOVATIVE DESIGN

### UNIQUE CONSTRUCTION



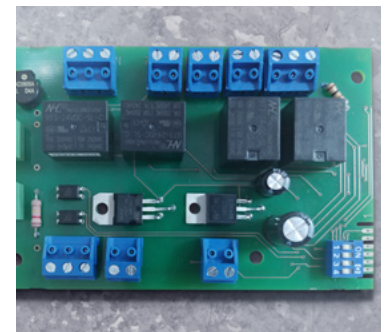
The combination of supply and exhaust, along with a low profile housing, makes this fan suitable for low ceilings and tight spaces.

### NEWLY DESIGNED IMPELLERS



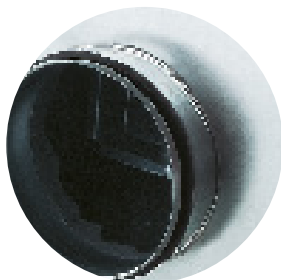
Specifically designed impellers provide a powerful, yet smooth and quiet airflow.

### BUILT-IN CONTROLLER



Integrated controller provides automatic switching between supply and exhaust modes in accordance with code requirements. DIP switch of cyclic timer is located on the control board.

### ATTENTION TO DETAILS



Collars with a rubber sealant prevent air leakage and pressure loss.

### EASY TO INSTALL



The fan casing is equipped with mounting brackets for easy installation.

### EASY TO CLEAN



The fan is equipped with a service door and removable ventilator block for easy maintenance.



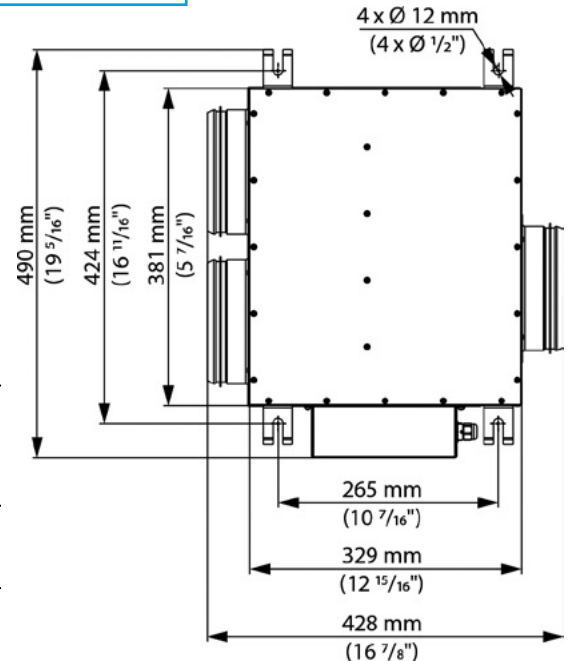
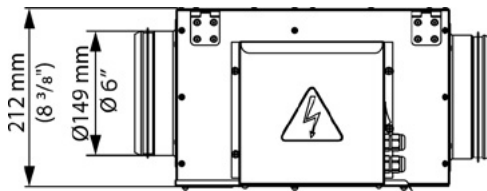
# TYPICAL 2 BEDROOM UNIT PLAN CONVENTIONAL DESIGN V. FARTF IRF-150 (HIGH RISE)

Components	Using FARTF Fan	Conventional
Fartf Fan IRF-150	1	0
Outside Air Fan	0	1
Bathroom Fan #1	0	1
Bathroom Fan #2	0	1
Penetrations to the Exterior	1	3
Clearance from Bathroom Exhaust and OSA	0	10' apart
Drop Ceiling/Lining Joist Bay	40% less**	40% more**

\*\* Approximate numbers as each case could vary.

## IRF-150 PRODUCT SHEET

### Dimensions

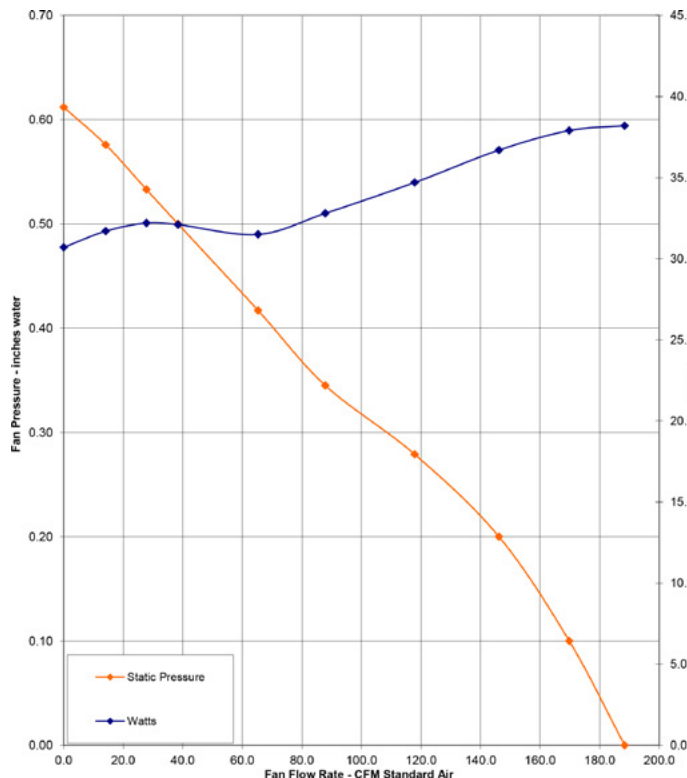


### Performance

Model	Energy Star	Mode	RPM*	Duct dia	Watts*	Amps*	CFM vs. Static Pressure (Ps) in WG					Max. Ps	Volts / Hz
							0"	0.1"	0.2"	0.35"	0.5"		
IRF-150	V	exhaust	2351	6"	37,1	0,32	194	175	150	87	47	0,62	120 / 60
		supply	2371		37,7	0,34	204	183	160	120	70	0,7	

\* The parameters RPM, Watts, Amps are indicated at 0.2 in WG static pressure.

### Exhaust



### Supply

